

## Recombinant Human C5 protein, Fc-tagged

Cat. No. C5-092H Lot. No. (See product label)

### SPECIFICATION

**Product Overview** Recombinant Human C5 (Leu679-Arg751) protein was fused to human IgG1 Fc tag at C-terminus and expressed in human 293 cells (HEK293).

**Species** Human

**Source** HEK293

**ProteinLength** Leu679-Arg751

#### Description

Complement Component C5a (C5a) is also known as C5, and is a protein fragment released from complement component C5. It is a potent chemotactic factor for human peripheral blood neutrophils and monocytes, and is believed to play an important role in a number of inflammatory conditions. There are several functions in the below: C5a is an anaphylatoxin, causing the release of histamine from mast cells; C5a is effective leukocyte chemoattractants, causing the accumulation of white blood cells, especially neutrophil granulocytes, at sites of complement activation; C5a activates white blood cells by increasing avidity for white blood cell integrins and upregulating the Lipoxygenase pathway for arachidonic acid metabolism; C5a is a powerful inflammatory mediator, and seems to be a key factor in the development of pathology of many inflammatory diseases involving the complement system; C5a modulates balance between activating versus inhibitory IgG Fc receptors on leukocytes, thereby enhancing autoimmune response.

**Predicted N Terminal** Leu679

 Tel: 1-631-559-9269 1-516-512-3133

 Email: [info@creative-biomart.com](mailto:info@creative-biomart.com)  Fax: 1-631-938-8127

 45-1 Ramsey Road, Shirley, NY 11967, USA

<b>Form</b>	Lyophilized from 0.22 µm filtered solution in Tris with Glycine, Arginine and NaCl, pH7.5, 10% trehalose.
<b>Molecular Mass</b>	The protein has a calculated MW of 34.6 kDa. The protein migrates as 38-40 kDa and 41-44 kDa under reducing (R) condition (SDS-PAGE) due to glycosylation.
<b>Endotoxin</b>	Less than 1.0 EU per µg by the LAL method.
<b>Purity</b>	>90% as determined by SDS-PAGE.
<b>Storage</b>	<p>For long term storage, the product should be stored at lyophilized state at -20 centigrade or lower.</p> <p>Please avoid repeated freeze-thaw cycles.</p> <p>This product is stable after storage at:</p> <ul style="list-style-type: none"> <li>-20 to -70 centigrade for 12 months in lyophilized state;</li> <li>-70 centigrade for 3 months under sterile conditions after reconstitution.</li> </ul>
<b>Reconstitution</b>	It is recommended that sterile water be added to the vial to prepare a stock solution of 0.2 ug/ul. Centrifuge the vial at 4°C before opening to recover the entire contents.

## GENE INFORMATION

<b>Gene Name</b>	C5
<b>Official Symbol</b>	C5
<b>Synonyms</b>	C5; complement component 5; complement C5; CPAMD4; anaphylatoxin C5a analog; C3 and PZP-like alpha-2-macroglobulin domain-containing protein 4; FLJ17816; FLJ17822; MGC142298
<b>Gene ID</b>	727

 Tel: 1-631-559-9269 1-516-512-3133

 Email: [info@creative-biomart.com](mailto:info@creative-biomart.com)  Fax: 1-631-938-8127

 45-1 Ramsey Road, Shirley, NY 11967, USA

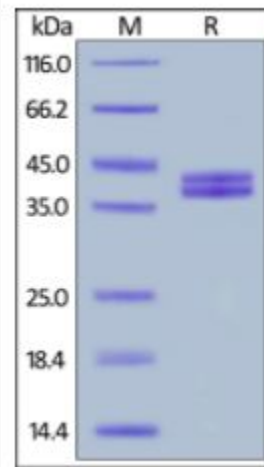
mRNA Refseq [NM\\_001735](#)

Protein Refseq [NP\\_001726](#)

MIM [120900](#)

UniProt ID [P01031](#)

**SDS-PAGE of C5-092H**



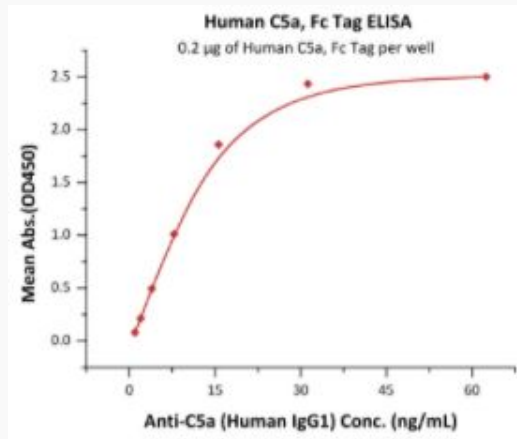
Human C5a, Fc Tag on SDS-PAGE under reducing (R) condition. The gel was stained overnight with Coomassie Blue. The purity of the protein is greater than 90%.

 Tel: 1-631-559-9269 1-516-512-3133

 Email: [info@creative-biomart.com](mailto:info@creative-biomart.com)  Fax: 1-631-938-8127

 45-1 Ramsey Road, Shirley, NY 11967, USA

**Bioactivity-ELISA of  
C5-092H**



Immobilized Human C5a, Fc Tag at 2 µg/mL (100 µL/well) can bind Anti-C5a (Human IgG1) with a linear range of 2-16 ng/mL (QC tested).

 Tel: 1-631-559-9269 1-516-512-3133

 Email: [info@creative-biomart.com](mailto:info@creative-biomart.com)  Fax: 1-631-938-8127

 45-1 Ramsey Road, Shirley, NY 11967, USA