

Active Recombinant Human C5 protein, His&hFc-tagged

Cat. No. C5-3092H Lot. No. (See product label)

SPECIFICATION

Product Overview	Active Recombinant Human C5 protein(P01031)(678~751 aa), fused with N-terminal His tag and C-terminal hFc tag, was expressed in HEK293.
Species	Human
Source	HEK293
ProteinLength	678-751 aa
Form	Lyophilized from sterile PBS, pH7.4, containing 0.01% SKL, 1mM DTT, 5% Trehalose and Proclin300.
Bio-activity	Complement Component 5a (C5a) is a component of the complement system which plays a key role in promoting migration and adherence of neutrophils and monocytes to vessel walls. C5a has been proven to be able to induce chemotactic migration of THP-1 cells. Therefore, chemotaxis assay used 24-well microchemotaxis system was undertaken to detect the chemotactic effect of C5a on the human monocytic cell line THP-1. Briefly, THP-1 cells were seeded into the upper chambers (100 μ cell suspension, 10 ⁶ cells/mL in RPMI 1640 with 0.5% FBS) and C5a (50ng/mL and 100ng/mL diluted separately in serum free RPMI 1640) was added in lower chamber with a polycarbonate filter (8 μ m pore size) used to separate the two compartments. After incubation at 37°C with 5% CO ₂ for 2h, the filter was removed, then cells in low chamber were observed by inverted microscope at low magnification (\times 100) and the number of migrated cells were counted at high magnification (\times 400) randomly (five

 Tel: 1-631-559-9269 1-516-512-3133

 Email: info@creative-biomart.com  Fax: 1-631-938-8127

 45-1 Ramsey Road, Shirley, NY 11967, USA

fields for each filter). Result: C5a is able to induce migration of THP-1 cells. The migrated THP-1 cells in low chamber at low magnification (×100) were shown.

Molecular Mass	35.0kDa
Endotoxin	<1.0EU per 1µg (determined by the LAL method).
Purity	> 95% as determined by SDS-PAGE.
Storage	Avoid repeated freeze/thaw cycles. Store at -20°C for 12 months. Aliquot and store at -80°C for 12 months.
Reconstitution	Reconstitute in 10mM PBS (pH7.4) to a concentration of 0.1-1.0 mg/mL. Do not vortex.

GENE INFORMATION

Gene Name	C5 complement component 5 [Homo sapiens]
Official Symbol	C5
Synonyms	C5; complement component 5; complement C5; CPAMD4; anaphylatoxin C5a analog; C3 and PZP-like alpha-2-macroglobulin domain-containing protein 4; FLJ17816; FLJ17822; MGC142298;
Gene ID	727
mRNA Refseq	NM_001735
Protein Refseq	NP_001726

 Tel: 1-631-559-9269 1-516-512-3133

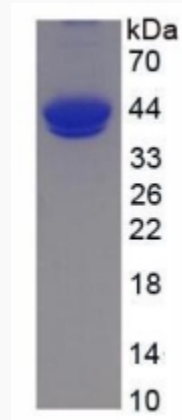
 Email: info@creative-biomart.com  Fax: 1-631-938-8127

 45-1 Ramsey Road, Shirley, NY 11967, USA

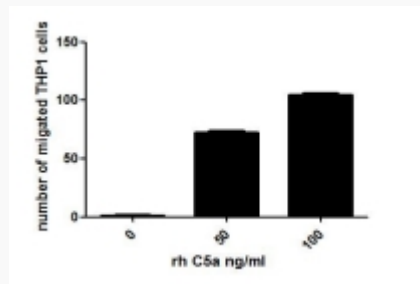
MIM 120900

UniProt ID P01031

SDS-PAGE



Activity



 Tel: 1-631-559-9269 1-516-512-3133

 Email: info@creative-biomart.com  Fax: 1-631-938-8127

 45-1 Ramsey Road, Shirley, NY 11967, USA