

## Recombinant Rat C5 Protein, His-tagged

**Cat. No.** C5-346R    **Lot. No.** (See product label)

### SPECIFICATION

<b>Product Overview</b>	Recombinant Rat C5 Protein (Cys1541-Ala1688) with N-His tag was expressed in E. coli.
<b>Species</b>	Rat
<b>Source</b>	E.coli
<b>ProteinLength</b>	Cys1541-Ala1688
<b>Description</b>	Enables C5a anaphylatoxin chemotactic receptor binding activity. Involved in several processes, including glucose homeostasis; leukocyte migration involved in inflammatory response; and negative regulation of catecholamine secretion. Located in extracellular space. Used to study adult respiratory distress syndrome; asthma; and neutropenia. Biomarker of brain edema. Human ortholog(s) of this gene implicated in several diseases, including complement component 5 deficiency; liver cirrhosis; neutropenia; paroxysmal nocturnal hemoglobinuria; and pneumonia. Orthologous to human C5 (complement C5).
<b>Form</b>	Freeze-dried powder
<b>Molecular Mass</b>	Predicted Molecular Mass: 20.3 kDa Accurate Molecular Mass: 20.3 kDa
<b>Purity</b>	> 90%

 Tel: 1-631-559-9269    1-516-512-3133

 Email: [info@creative-biomart.com](mailto:info@creative-biomart.com)     Fax: 1-631-938-8127

 45-1 Ramsey Road, Shirley, NY 11967, USA

<b>Applications</b>	Positive Control; Immunogen; SDS-PAGE; WB.
<b>Stability</b>	The thermal stability is described by the loss rate. The loss rate was determined by accelerated thermal degradation test, that is, incubate the protein at 37 centigrade for 48h, and no obvious degradation and precipitation were observed. The loss rate is less than 5% within the expiration date under appropriate storage condition.
<b>Storage</b>	Avoid repeated freeze/thaw cycles. Store at 2-8 centigrade for one month. Aliquot and store at -80 centigrade for 12 months.
<b>Storage Buffer</b>	PBS, pH7.4, containing 0.01% SKL, 1 mM DTT, 5% Trehalose and Proclin300.
<b>Reconstitution</b>	Reconstitute in sterile water to a concentration of 0.1-1.0 mg/mL. Do not vortex.

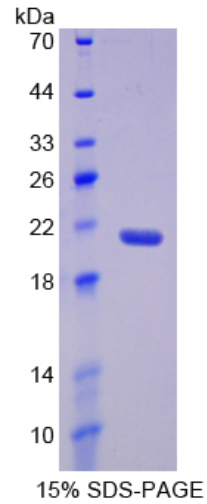
## GENE INFORMATION

<b>Gene Name</b>	C5 complement component 5 [ <i>Rattus norvegicus</i> (Norway rat) ]
<b>Official Symbol</b>	C5
<b>Synonyms</b>	C5; complement component 5; Hc; C5a
<b>Gene ID</b>	362119
<b>mRNA Refseq</b>	NM_053020
<b>Protein Refseq</b>	NP_444179

 Tel: 1-631-559-9269 1-516-512-3133

 Email: [info@creative-biomart.com](mailto:info@creative-biomart.com)  Fax: 1-631-938-8127

 45-1 Ramsey Road, Shirley, NY 11967, USA



Tel: 1-631-559-9269 1-516-512-3133

Email: [info@creative-biomart.com](mailto:info@creative-biomart.com) Fax: 1-631-938-8127

45-1 Ramsey Road, Shirley, NY 11967, USA