

Recombinant Human C5AR1 Protein, GST-Tagged

Cat. No. C5AR1-0079H Lot. No. (See product label)

SPECIFICATION

Product Overview	Human C5R1 full-length ORF (AAH08982, 1 a.a. - 350 a.a.) recombinant protein with GST-tag at N-terminal.
Species	Human
Source	Wheat Germ
Description	C5AR1 (Complement C5a Receptor 1) is a Protein Coding gene. Diseases associated with C5AR1 include Listeria Meningitis and Malaria. Among its related pathways are Peptide ligand-binding receptors and Innate Immune System. GO annotations related to this gene include G-protein coupled receptor activity and complement component C5a binding. An important paralog of this gene is C5AR2.
Molecular Mass	64.24 kDa
AA Sequence	MNSFNYYTTPDYGHYDDKDTLNLNTPVDKTSNTPDILALVIFAVVFLVGVGNALV VWVTAFAEKRTINAIWFLNLAVADFLSCLALPILFTSIVQHHHWPFGGAACSILPSLILL NMYASILLLATISADRFLLVFKPIWCQNFRGAGLAWIACAVAWGLALLLTIPSFLYRVV REEYFPPKVLGVDYSHDKRRERAVAIVRLVLGFLWPLLLTICITYFILLRTWSRRAT RSTKTLKVVVAVVASFFIFWLPYQVTGIMMSFLEPSSPTFLLLNLKDSLCSFAYINCC INPIYVVAGQGFQGRRLRKSLSLLRNVLTEESVVRESKSFTRSTVDTMAQKTQAV
Applications	Enzyme-linked Immunoabsorbent Assay Western Blot (Recombinant protein) Antibody Production

 Tel: 1-631-559-9269 1-516-512-3133

 Email: info@creative-biomart.com  Fax: 1-631-938-8127

 45-1 Ramsey Road, Shirley, NY 11967, USA

Protein Array

Notes	Best use within three months from the date of receipt of this protein.
Storage	Store at -80 centigrade. Aliquot to avoid repeated freezing and thawing.
Storage Buffer	50 mM Tris-HCl, 10 mM reduced Glutathione, pH=8.0 in the elution buffer.

GENE INFORMATION

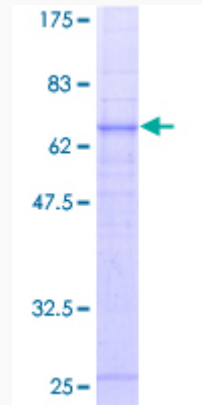
Gene Name	C5AR1 complement component 5a receptor 1 [Homo sapiens]
Official Symbol	C5AR1
Synonyms	C5AR1; complement component 5a receptor 1; C5R1, complement component 5 receptor 1 (C5a ligand); C5a anaphylatoxin chemotactic receptor; C5A; C5AR; CD88; C5a-R; C5a ligand; C5a anaphylatoxin receptor; complement component 5 receptor 1; C5R1;
Gene ID	728
mRNA Refseq	NM_001736
Protein Refseq	NP_001727
MIM	113995
UniProt ID	P21730

 Tel: 1-631-559-9269 1-516-512-3133

 Email: info@creative-biomart.com  Fax: 1-631-938-8127

 45-1 Ramsey Road, Shirley, NY 11967, USA

**Quality Control
Testing**



12.5% SDS-PAGE Stained with Coomassie Blue.

 Tel: 1-631-559-9269 1-516-512-3133

 Email: info@creative-biomart.com  Fax: 1-631-938-8127

 45-1 Ramsey Road, Shirley, NY 11967, USA