

Recombinant Human C5AR1 Full Length Transmembrane protein, His-tagged

Cat. No. C5AR1-1482H Lot. No. (See product label)

SPECIFICATION

Product Overview	Recombinant Human C5AR1 protein(P21730)(1-350aa), fused to C-terminal His tag, was expressed in E. coli.
Species	Human
Source	E.coli
ProteinLength	1-350aa
Form	If the delivery form is liquid, the default storage buffer is Tris/PBS-based buffer, 5%-50% glycerol. If the delivery form is lyophilized powder, the buffer before lyophilization is Tris/PBS-based buffer, 6% Trehalose, pH 8.0.
Molecular Mass	40.7 kDa
AA Sequence	MDSFNYYTPDYGHYDDKDTLDLNTVPDKTSNTPDILALVIFAVVFLVGVLGNALV VWVTAFAEKRTINAIWFLNLAVADFLSCLALPILFTSIVQHHHWPFGGAAACSILPSLILL NMYASILLLATISADRFLLVFKPIWCQNFRGAGLAWIACAVAWGLALLLTIPSFLYRVV REEYFPPKVLGVDYSHDKRRERAVAIVRLVLGFLWPLLTLTICYTFILLRTWSRRAT RSTKTLKVVVAVVASFFIFWLPYQVTGIMMSFLEPSSPTFLLLKKLDSL CVSFAYINCC INPIYVVAGQGFQGRRLRKSLSLLRNVLTEESVVRESKSFTRSTVDTMAQKTQAV
Purity	Greater than 90% as determined by SDS-PAGE.

 Tel: 1-631-559-9269 1-516-512-3133

 Email: info@creative-biomart.com  Fax: 1-631-938-8127

 45-1 Ramsey Road, Shirley, NY 11967, USA

Storage Store at -20°C/-80°C upon receipt, aliquoting is necessary for multiple use. Avoid repeated freeze-thaw cycles.

Reconstitution Please reconstitute protein in deionized sterile water to a concentration of 0.1-1.0 mg/mL. We recommend to add 5-50% of glycerol (final concentration) and aliquot for long-term storage at -20°C/-80°C. Our default final concentration of glycerol is 50%.

GENE INFORMATION

Gene Name C5AR1 complement component 5a receptor 1 [Homo sapiens]

Official Symbol C5AR1

Synonyms C5AR1; complement component 5a receptor 1; C5R1, complement component 5 receptor 1 (C5a ligand); C5a anaphylatoxin chemotactic receptor; C5A; C5AR; CD88; C5a-R; C5a ligand; C5a anaphylatoxin receptor; complement component 5 receptor 1; C5R1;

Gene ID 728

mRNA Refseq NM_001736

Protein Refseq NP_001727

MIM 113995

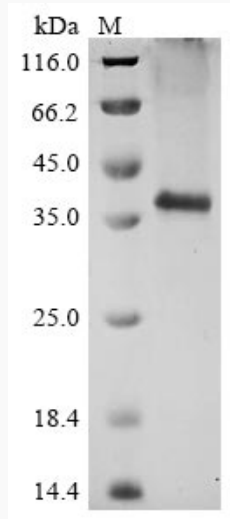
UniProt ID P21730

 Tel: 1-631-559-9269 1-516-512-3133

 Email: info@creative-biomart.com  Fax: 1-631-938-8127

 45-1 Ramsey Road, Shirley, NY 11967, USA

SDS-PAGE



 Tel: 1-631-559-9269 1-516-512-3133

 Email: info@creative-biomart.com  Fax: 1-631-938-8127

 45-1 Ramsey Road, Shirley, NY 11967, USA