

# Active Recombinant Full Length Human C5AR1 Protein, C-Flag-tagged

**Cat. No.** C5AR1-348HFL    **Lot. No.** (See product label)

## SPECIFICATION

<b>Product Overview</b>	Recombinant Full Length Human C5AR1 Protein, fused to Flag-tag at C-terminus, was expressed in Mammalian cells.
<b>Species</b>	Human
<b>Source</b>	Mammalian Cells
<b>Description</b>	Enables G protein-coupled receptor activity and complement component C5a receptor activity. Involved in several processes, including complement component C5a signaling pathway; mRNA transcription by RNA polymerase II; and positive regulation of ERK1 and ERK2 cascade. Located in apical part of cell and basolateral plasma membrane. Biomarker of Alzheimer's disease; asthma; chronic obstructive pulmonary disease; rhinitis; and severe acute respiratory syndrome.
<b>Form</b>	25 mM Tris HCl, pH 7.3, 100 mM glycine, 10% glycerol.
<b>Bio-activity</b>	Binding assay
<b>Molecular Mass</b>	39.1 kDa
<b>AA Sequence</b>	MNSFNYYTTPDYGHYDDKDTLDLNTVPDKTSNTRLRVPDILALVIFAVVFLVGLGNALV VWVTAFAEKRTI NAIWFLNLAVADFLSCLALPILFTSIVQHHHWPFGGAAACSILPSLIL LNMYASILLLATISADRFLLVFK PIWCQNFRGAGLAWIACAVAWGLALLLTIPSFLYRV VREEYFPPKVLGVDYSHDKRRERAVAIIVRLVLG FLWPLLTLTICYTFILLRTWSRRA

 Tel: 1-631-559-9269    1-516-512-3133

 Email: [info@creative-biomart.com](mailto:info@creative-biomart.com)     Fax: 1-631-938-8127

 45-1 Ramsey Road, Shirley, NY 11967, USA

TRSTKTLKVVVAVVASFFIFWLPYQVTGIMMSFLEPSSPTFLLLNK LDSLCVSFAYIN  
 CCINPIIYVAGQGFGRLRKSPLLRNVLTEESVVRESKSFTRSTVDTMAQKTQA  
 VTRTRPLEQKLISEEDLAANDILDYKDDDDKV

<b>Purity</b>	> 80% as determined by SDS-PAGE and Coomassie blue staining.
<b>Stability</b>	Stable for 12 months from the date of receipt of the product under proper storage and handling conditions. Avoid repeated freeze-thaw cycles.
<b>Storage</b>	Store at -80 centigrade.
<b>Concentration</b>	>50 ug/mL as determined by microplate BCA method.
<b>Preparation</b>	Recombinant protein was captured through anti-DDK affinity column followed by conventional chromatography steps.
<b>Protein Families</b>	Druggable Genome, GPCR, Transmembrane
<b>Protein Pathways</b>	Complement and coagulation cascades, Neuroactive ligand-receptor interaction
<b>Full Length</b>	Full L.

## GENE INFORMATION

<b>Gene Name</b>	C5AR1 complement C5a receptor 1 [ Homo sapiens (human) ]
<b>Official Symbol</b>	C5AR1
<b>Synonyms</b>	C5A; C5AR; C5R1; CD88
<b>Gene ID</b>	728

 Tel: 1-631-559-9269 1-516-512-3133

 Email: [info@creative-biomart.com](mailto:info@creative-biomart.com)  Fax: 1-631-938-8127

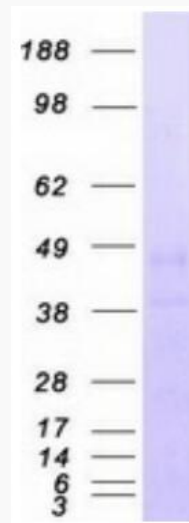
 45-1 Ramsey Road, Shirley, NY 11967, USA

mRNA Refseq [NM\\_001736.4](#)

Protein Refseq [NP\\_001727.2](#)

MIM [113995](#)

UniProt ID [P21730](#)



Coomassie blue staining of purified C5AR1 protein.

 Tel: 1-631-559-9269 1-516-512-3133

 Email: [info@creative-biomart.com](mailto:info@creative-biomart.com)  Fax: 1-631-938-8127

 45-1 Ramsey Road, Shirley, NY 11967, USA