

## Recombinant Human C6 Protein, GST-Tagged

Cat. No. C6-0098H Lot. No. (See product label)

### SPECIFICATION

<b>Product Overview</b>	Human C6 full-length ORF (AAH35723, 23 a.a. - 934 a.a.) recombinant protein with GST-tag at N-terminal.
<b>Species</b>	Human
<b>Source</b>	Wheat Germ
<b>Description</b>	This gene encodes a component of the complement cascade. The encoded protein is part of the membrane attack complex that can be incorporated into the cell membrane and cause cell lysis. Mutations in this gene are associated with complement component-6 deficiency. Transcript variants encoding the same protein have been described.[provided by RefSeq, Nov 2012]
<b>Molecular Mass</b>	125.84 kDa
<b>AA Sequence</b>	FCDHYAWTQWTSCSKTCNSGTQSRHRQIVVDKYYQENFCEQICSKQETRECNWQ RCPINCLLGDFGPWSDCDPCIEKQSKVRSVLRPSQFGGQPCTEPLVAFQPCIPSKLC KIEEADCKNKFRCDSGRCIARKLECNGENDCGDNSDERDCGRTKAVCTRKYNPIPS VQLMGNGFHFLAGEPRGEVLDNSFTGGICKTVKSSRTSNPYRVPANLENVGFVQQT AEDDLKTDIFYKDLTSLGHNENQQGSFSSQGGSSFSVPIFYSSKRSEININHNSAFKQ AIQASHKKDSSFIRIHKVMKVLNFTTKAKDLHLSDVFLKALNHLPLEYNSALYSRIFDD FGTHYFTSGSLGGVYDILLYQFSSEELKNSGLTEEEAKHCVRIETKKRVLFAKKTVE HRCTTNKLSEKHEGFSFIQGAEKISLIRGGRSEYGAALAWEKGSSGLEEKTFSEWLE SVKENPAVIDFELAPIVDLVRNIPCAVTKRNNLRKALQEYAAKFDPCQCPCPNNGR

 Tel: 1-631-559-9269 1-516-512-3133

 Email: [info@creative-biomart.com](mailto:info@creative-biomart.com)  Fax: 1-631-938-8127

 45-1 Ramsey Road, Shirley, NY 11967, USA

PTLSGTECLCVCQSGTYGENCEKQSPDYKSNAVDGQWGCWSSWSTCDATYKRSR  
TRECNNPAPQRGGKRCEGEKQRQEEDCTFSIMENNGQPCINDDEEMKEVDLPEIAD  
SGCPQPVPPENGFIRNEKQLYLVGEDVEISCLTGFETVGYQYFRCLPDGTWRQGDV  
ECQRTECIKPVVQEVLTITPFQRLYRIGESIELTCKPGFVVAGPSRYTCQGNSWTPPI  
SNSLTCEKDTLTKLKGHCQLGQKQSGSECICMSPEEDCSHHSIDLCVFDTDSNDYF  
TSPACKFLAEKCLNNQQLHFLHIGSCQDGRQLEWGLERTRLSSNSTKKESCGYDTC  
YDWEKCSASTSKCVCLLPPQCFCGKNQLYCVKMGSSTSEKTLNICEVGTIRCANKR  
MEILHPGKCLA

**Applications**

Enzyme-linked Immunoabsorbent Assay  
Western Blot (Recombinant protein)  
Antibody Production  
Protein Array

**Notes**

Best use within three months from the date of receipt of this protein.

**Storage**

Store at -80 centigrade. Aliquot to avoid repeated freezing and thawing.

**Storage Buffer**

50 mM Tris-HCl, 10 mM reduced Glutathione, pH=8.0 in the elution buffer.

## GENE INFORMATION

**Gene Name**

C6 complement component 6 [ Homo sapiens ]

**Official Symbol**

C6

**Synonyms**

C6; complement component 6; complement component C6;

**Gene ID**

729

**mRNA Refseq**

NM\_000065

 Tel: 1-631-559-9269 1-516-512-3133

 Email: [info@creative-biomart.com](mailto:info@creative-biomart.com)  Fax: 1-631-938-8127

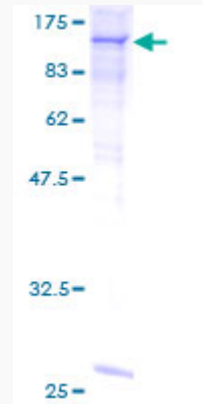
 45-1 Ramsey Road, Shirley, NY 11967, USA

**Protein Refseq** NP\_000056

**MIM** 217050

**UniProt ID** P13671

**Quality Control  
Testing**



12.5% SDS-PAGE Stained with Coomassie Blue.

 Tel: 1-631-559-9269 1-516-512-3133

 Email: [info@creative-biomart.com](mailto:info@creative-biomart.com)  Fax: 1-631-938-8127

 45-1 Ramsey Road, Shirley, NY 11967, USA