

Recombinant Full Length Human C8B Protein, C-Flag-tagged

Cat. No. C8B-1903HFL **Lot. No.** (See product label)

SPECIFICATION

Product Overview	Recombinant Full Length Human C8B Protein, fused to Flag-tag at C-terminus, was expressed in Mammalian cells.
Species	Human
Source	Mammalian Cells
Description	This gene encodes one of the three subunits of the complement component 8 (C8) protein. C8 is composed of equimolar amounts of alpha, beta and gamma subunits, which are encoded by three separate genes. C8 is one component of the membrane attack complex, which mediates cell lysis, and it initiates membrane penetration of the complex. This protein mediates the interaction of C8 with the C5b-7 membrane attack complex precursor. In humans deficiency of this protein is associated with increased risk of meningococcal infections. Alternative splicing results in multiple transcript variants.
Form	25 mM Tris HCl, pH 7.3, 100 mM glycine, 10% glycerol.
Molecular Mass	63.4 kDa
AA Sequence	MKNSRTWAWRAPVELFLLCAALGCLSLPGSRGERPHSFGSNAVNKSF AKSRQMRS VDVTLMPIDCELSSW SSWTTCDP CQKKRYRYAYLLQPSQFHGEP CNFSDKEVEDC VTNRPCRSQVRCEGFVCAQTGR CVNRLLC NGDND CGDQSD EANCRR IYK KCQH EMDQYWGIGSLASGINLFTNSFEGPVL DHRYYAGGCS PHYILNTRF RKPYNVESYT PQTQGKYEFILKEYESY SDFERNVTEK MASKSGFSFGFKIPGIFELGISSQSDR GKHY

 Tel: 1-631-559-9269 1-516-512-3133

 Email: info@creative-biomart.com  Fax: 1-631-938-8127

 45-1 Ramsey Road, Shirley, NY 11967, USA

IR RTKRFSHTKSVFLHARSDLEVAHYKPKRSLMLHYEFLQRVKRRLPLEYSYGEYRD
 LFRDFGTHYITEAVL GGIYEYTLVMNKEAMERGDYTLNNVHACAKNDFKIGGAIEEV
 YVSLGVSVMKCRGILNEIKDRNKRDTMV EDLVVLRGGASEHITTLAYQELPTADLM
 QEWGDAVQYNPAIIKVKVEPLYELVTATDFAYSSTVRQNMK QALEEFQKEVSSCHC
 APCQNGVVPVLKGSRCDCICPVGSQGLACEVSYRKNTPIDGKWNCWSNWSSCSG
 R RKTRQRQCNNPPPQNGGSPCSGPASETLDCS TRTRPLEQKLISEEDLAANDILD
 YKDDDDKV

Purity > 80% as determined by SDS-PAGE and Coomassie blue staining.

Stability Stable for 12 months from the date of receipt of the product under proper storage and handling conditions. Avoid repeated freeze-thaw cycles.

Storage Store at -80 centigrade.

Concentration >50 ug/mL as determined by microplate BCA method.

Preparation Recombinant protein was captured through anti-DDK affinity column followed by conventional chromatography steps.

Protein Families Druggable Genome, Secreted Protein, Transmembrane

Protein Pathways Complement and coagulation cascades, Prion diseases, Systemic lupus erythematosus

Full Length Full L.

GENE INFORMATION

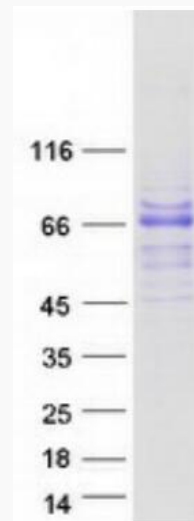
Gene Name C8B complement C8 beta chain [*Homo sapiens* (human)]

 Tel: 1-631-559-9269 1-516-512-3133

 Email: info@creative-biomart.com  Fax: 1-631-938-8127

 45-1 Ramsey Road, Shirley, NY 11967, USA

Official Symbol	C8B
Synonyms	C82
Gene ID	732
mRNA Refseq	NM_000066.4
Protein Refseq	NP_000057.3
MIM	120960
UniProt ID	P07358



Coomassie blue staining of purified C8B protein.

 Tel: 1-631-559-9269 1-516-512-3133

 Email: info@creative-biomart.com  Fax: 1-631-938-8127

 45-1 Ramsey Road, Shirley, NY 11967, USA