

## Recombinant Human C8G protein, His-tagged

**Cat. No.** C8G-4234H    **Lot. No.** (See product label)

### SPECIFICATION

<b>Product Overview</b>	Recombinant Human C8G protein(P07360)(21-202aa), fused with N-terminal His tag, was expressed in HEK293.
<b>Species</b>	Human
<b>Source</b>	HEK293
<b>ProteinLength</b>	21-202aa
<b>Tag</b>	N-His
<b>Form</b>	If the delivery form is liquid, the default storage buffer is Tris/PBS-based buffer, 5%-50% glycerol. If the delivery form is lyophilized powder, the buffer before lyophilization is Tris/PBS-based buffer, 6% Trehalose, pH 8.0.
<b>Molecular Mass</b>	23.9 kDa
<b>Purity</b>	Greater than 90% as determined by SDS-PAGE. Greater than 90% as determined by SEC-HPLC.
<b>Storage</b>	Store at -20°C/-80°C upon receipt, aliquoting is necessary for mutiple use. Avoid repeated freeze-thaw cycles.
<b>Reconstitution</b>	We recommend that this vial be briefly centrifuged prior to opening to bring the contents to the bottom. Please reconstitute protein in deionized sterile water to a

 Tel: 1-631-559-9269    1-516-512-3133

 Email: [info@creative-biomart.com](mailto:info@creative-biomart.com)     Fax: 1-631-938-8127

 45-1 Ramsey Road, Shirley, NY 11967, USA

concentration of 0.1-1.0 mg/mL. We recommend to add 5-50% of glycerol (final concentration) and aliquot for long-term storage at -20°C/-80°C.

**AA Sequence**

QKPQRPRRPASPISTIQPKANFDAQQFAGTWLLVAVGSACRFLQEQQGHRAEATTLH  
 VAPQGTAMAVSTFRKLDGICWQVRQLYGDTGVLGRFLLQARDARGAVHVVVAETD  
 YQSFVLYLERAGQLSVKLYARSLPVSDSVLSGFEQRVQEHLTEDQIFYFPKYGFC  
 EAADQFHVLDEVRR

## GENE INFORMATION

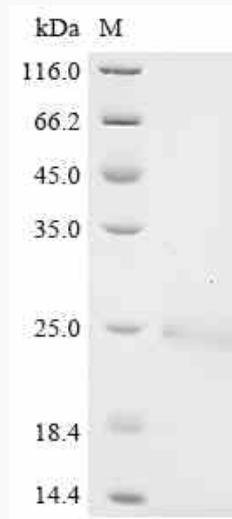
<b>Gene Name</b>	C8G complement component 8, gamma polypeptide [ Homo sapiens ]
<b>Official Symbol</b>	C8G
<b>Synonyms</b>	C8G; complement component 8, gamma polypeptide; complement component C8 gamma chain; C8C; MGC142186;
<b>Gene ID</b>	733
<b>mRNA Refseq</b>	NM_000606
<b>Protein Refseq</b>	NP_000597
<b>MIM</b>	120930
<b>UniProt ID</b>	P07360

 Tel: 1-631-559-9269 1-516-512-3133

 Email: [info@creative-biomart.com](mailto:info@creative-biomart.com)  Fax: 1-631-938-8127

 45-1 Ramsey Road, Shirley, NY 11967, USA

**SDS-PAGE**



 Tel: 1-631-559-9269 1-516-512-3133

 Email: [info@creative-biomart.com](mailto:info@creative-biomart.com)  Fax: 1-631-938-8127

 45-1 Ramsey Road, Shirley, NY 11967, USA