

Recombinant Rat C9 Protein

Cat. No. C9-04R Lot. No. (See product label)

SPECIFICATION

Product Overview	Recombinant Rat C9 Protein was expressed in E. coli.
Species	Rat
Source	E.coli
Description	Involved in blood coagulation. Predicted to be located in extracellular space and plasma membrane. Predicted to be part of membrane attack complex. Biomarker of polycystic kidney disease. Human ortholog(s) of this gene implicated in age related macular degeneration 15 and complement component 9 deficiency. Orthologous to human C9 (complement C9).
Form	Liquid. In 20 mM Tris-HCl, 150 mM NaCl, pH 8.0.
Molecular Mass	~60.3 kDa
AA Sequence	<p>QAPEPTPREEPSADALLPIDCRMSTWSQWSQCDPCLKQRFRRSRSIEVFGQFQGKS CADALGDRQHCEPTQECEEVQENCGNDFQCETGRCIKRKLCCNGDNDCGDFSDES DCESDPRLPCRDRVVEESELGRTAGYGINILGMDPLGTPFDNEFYNGLCDRVRDGN TLTYRKPWNVAFLAYETKADKNFRTENYEEQFEMFKTIVRDRTTSFNANLALKFTIT EAPIKKVGVDEVSPKNSKPKDSSVDFQFSYFKKENFQRLSSYLSQTKKMLHVK GMIQLGRFVMRNRGVMLTTTFLDDVKALPVSYEKGEYFGFLETYGTHYSSSGSLGG LYELIYVLDKASMKEKGVELSDVKRCLGFNLDVSLYTPLQTALEGPSLTANVNHSDC LKTGDGKVVNISRDHIIDDVISFIRGGTRKQAVLLKEKLLRGAKTIDVNDFINWASSLD DAPALISQKLSPIYNLIPLTMKDAYAKKQNMKAIEDYVNEFSARKCYPCQNGGTAILL</p>

Tel: 1-631-559-9269 1-516-512-3133

Email: info@creative-biomart.com Fax: 1-631-938-8127

45-1 Ramsey Road, Shirley, NY 11967, USA



DGQCMCSTIKFKGIACEISKQR

Purity

>90%

Storage

Short Term Storage at 4 centigrade, Long Term, please prepare aliquots with 20% glycerol and store at -20 to -80 centigrade. Avoid freeze/thaw cycles.

Concentration

0.21 mg/ml

Official Full Name

Complement C9

GENE INFORMATION

Gene Name

C9 complement C9 [*Rattus norvegicus* (Norway rat)]

Official Symbol

C9

Synonyms

C9D; ARMD15

Gene ID

117512

mRNA Refseq

NM_057146

Protein Refseq

NP_476487

UniProt ID

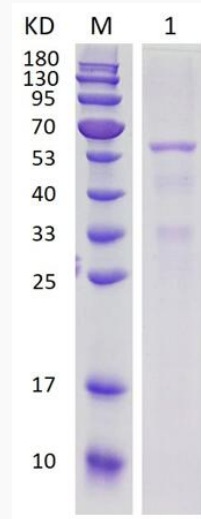
Q62930

 Tel: 1-631-559-9269 1-516-512-3133

 Email: info@creative-biomart.com  Fax: 1-631-938-8127

 45-1 Ramsey Road, Shirley, NY 11967, USA

SDS-PAGE



15% SDS-PAGE analysis profiles of purified Rat C9 (CBB stained).

 Tel: 1-631-559-9269 1-516-512-3133

 Email: info@creative-biomart.com  Fax: 1-631-938-8127

 45-1 Ramsey Road, Shirley, NY 11967, USA