

## Recombinant Human C9 protein, His-GST-tagged

Cat. No. C9-5142H Lot. No. (See product label)

### SPECIFICATION

<b>Product Overview</b>	Recombinant Human C9 protein(P02748)(74-155aa), fused with N-terminal His and GST tag, was expressed in E.coli.
<b>Species</b>	Human
<b>Source</b>	E.coli
<b>ProteinLength</b>	74-155aa
<b>Form</b>	If the delivery form is liquid, the default storage buffer is Tris/PBS-based buffer, 5%-50% glycerol. If the delivery form is lyophilized powder, the buffer before lyophilization is Tris/PBS-based buffer, 6% Trehalose, pH 8.0.
<b>Molecular Mass</b>	40.7 kDa
<b>Purity</b>	Greater than 90% as determined by SDS-PAGE.
<b>Storage</b>	Store at -20°C/-80°C upon receipt, aliquoting is necessary for mutiple use. Avoid repeated freeze-thaw cycles.
<b>Reconstitution</b>	We recommend that this vial be briefly centrifuged prior to opening to bring the contents to the bottom. Please reconstitute protein in deionized sterile water to a concentration of 0.1-1.0 mg/mL. We recommend to add 5-50% of glycerol (final concentration) and aliquot for long-term storage at -20°C/-80°C.

 Tel: 1-631-559-9269 1-516-512-3133

 Email: [info@creative-biomart.com](mailto:info@creative-biomart.com)  Fax: 1-631-938-8127

 45-1 Ramsey Road, Shirley, NY 11967, USA

**AA Sequence**                      NGKRCTDAVGDRRQCVPTEPCEDAEDDCGNDFCSTGRCIKMRLRCNGDNDCGD  
FSDEDDCESEPRPPCRDRVVEESELART

## GENE INFORMATION

**Gene Name**                      [C9 complement component 9 \[ Homo sapiens \]](#)

**Official Symbol**                [C9](#)

**Synonyms**                      C9; complement component 9; complement component C9;

**Gene ID**                         [735](#)

**mRNA Refseq**                 [NM\\_001737](#)

**Protein Refseq**                [NP\\_001728](#)

**MIM**                              [120940](#)

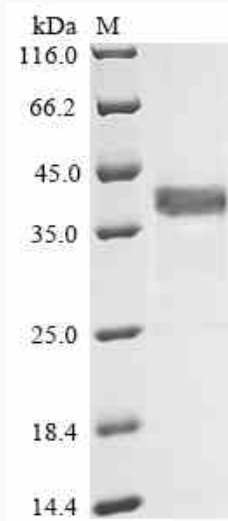
**UniProt ID**                      [P02748](#)

 Tel: 1-631-559-9269    1-516-512-3133

 Email: [info@creative-biomart.com](mailto:info@creative-biomart.com)     Fax: 1-631-938-8127

 45-1 Ramsey Road, Shirley, NY 11967, USA

**SDS-PAGE**



 Tel: 1-631-559-9269 1-516-512-3133

 Email: [info@creative-biomart.com](mailto:info@creative-biomart.com)  Fax: 1-631-938-8127

 45-1 Ramsey Road, Shirley, NY 11967, USA