

Recombinant Human CA10 Protein, GST-Tagged

Cat. No. CA10-0229H **Lot. No.** (See product label)

SPECIFICATION

Product Overview	Human CA10 partial ORF (NP_064563.1, 229 a.a. - 328 a.a.) recombinant protein with GST-tag at N-terminal.
Species	Human
Source	Wheat Germ
Description	This gene encodes a protein that belongs to the carbonic anhydrase family of zinc metalloenzymes, which catalyze the reversible hydration of carbon dioxide in various biological processes. The protein encoded by this gene is an acatalytic member of the alpha-carbonic anhydrase subgroup, and it is thought to play a role in the central nervous system, especially in brain development. Multiple transcript variants encoding the same protein have been found for this gene. [provided by RefSeq, Jul 2008]
Molecular Mass	36.74 kDa
AA Sequence	TSSFITYDGSMTIPPCYETASWIIMNKPVYITRMQMHSRLRLLSQNPQPSQIFLSMSDNF RPVQPLNNRCIRTNINFLSQGKDCPNRAQKLQYRVNEWLLK
Applications	Enzyme-linked Immunoabsorbent Assay Western Blot (Recombinant protein) Antibody Production Protein Array
Notes	Best use within three months from the date of receipt of this protein.

 Tel: 1-631-559-9269 1-516-512-3133

 Email: info@creative-biomart.com  Fax: 1-631-938-8127

 45-1 Ramsey Road, Shirley, NY 11967, USA

Storage Store at -80 centigrade. Aliquot to avoid repeated freezing and thawing.

Storage Buffer 50 mM Tris-HCl, 10 mM reduced Glutathione, pH=8.0 in the elution buffer.

GENE INFORMATION

Gene Name CA10 carbonic anhydrase X [Homo sapiens]

Official Symbol CA10

Synonyms CA10; carbonic anhydrase X; carbonic anhydrase-related protein 10; CA RPX; CARPX; HUCEP 15; CARP X; CA-RP X; cerebral protein 15; cerebral protein-15; carbonic anhydrase-related protein X; CA-RPX; HUCEP-15;

Gene ID 56934

mRNA Refseq NM_001082533

Protein Refseq NP_001076002

MIM 604642

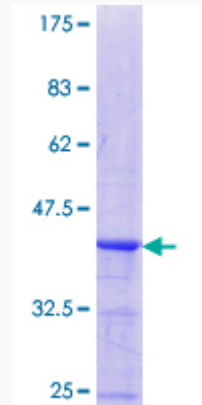
UniProt ID Q9NS85

 Tel: 1-631-559-9269 1-516-512-3133

 Email: info@creative-biomart.com  Fax: 1-631-938-8127

 45-1 Ramsey Road, Shirley, NY 11967, USA

**Quality Control
Testing**



12.5% SDS-PAGE Stained with Coomassie Blue.

 Tel: 1-631-559-9269 1-516-512-3133

 Email: info@creative-biomart.com  Fax: 1-631-938-8127

 45-1 Ramsey Road, Shirley, NY 11967, USA