

## Recombinant Human CA10 Protein (Ala21-Asn300), N-His-tagged

Cat. No. CA10-0510H    Lot. No. (See product label)

### SPECIFICATION

<b>Product Overview</b>	Recombinant human CA10 (Ala21-Asn300) was fused with the N-terminal His tag and was expressed in E. coli.
<b>Species</b>	Human
<b>Source</b>	E.coli
<b>ProteinLength</b>	Ala21-Asn300
<b>Form</b>	Lyophilized powder/frozen liquid
<b>Molecular Mass</b>	30.8 kDa
<b>Purity</b>	>90% as determined by SDS-PAGE
<b>Notes</b>	For research use only.
<b>Storage</b>	Use a manual defrost freezer and avoid repeated freeze thaw cycles. Store at 2 to 8 centigrade for one week. Store at -20 to -80 centigrade for twelve months from the date of receipt.
<b>Storage Buffer</b>	Supplied as solution form in PBS or lyophilized from PBS.
<b>Reconstitution</b>	Reconstitute in sterile water for a stock solution.

 Tel: 1-631-559-9269    1-516-512-3133

 Email: [info@creative-biomart.com](mailto:info@creative-biomart.com)     Fax: 1-631-938-8127

 45-1 Ramsey Road, Shirley, NY 11967, USA

**Shipping** They are shipped out with dry ice/blue ice unless customers require otherwise.

## GENE INFORMATION

**Gene Name** CA10 carbonic anhydrase X [ Homo sapiens (human) ]

**Official Symbol** CA10

**Synonyms** CA10; carbonic anhydrase X; carbonic anhydrase-related protein 10; CA RPX; CARPX; HUCEP 15; CARP X; CA-RP X; cerebral protein 15; cerebral protein-15; carbonic anhydrase-related protein X; CA-RPX; HUCEP-15;

**Gene ID** 56934

**mRNA Refseq** NM\_001082533

**Protein Refseq** NP\_001076002

**MIM** 604642

**UniProt ID** Q9NS85

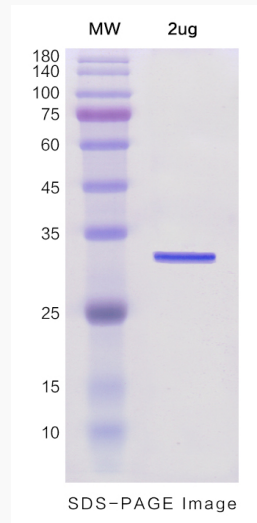
 Tel: 1-631-559-9269 1-516-512-3133

 Email: [info@creative-biomart.com](mailto:info@creative-biomart.com)  Fax: 1-631-938-8127

 45-1 Ramsey Road, Shirley, NY 11967, USA



**SDS-PAGE**



Tel: 1-631-559-9269 1-516-512-3133

Email: [info@creative-biomart.com](mailto:info@creative-biomart.com) Fax: 1-631-938-8127

45-1 Ramsey Road, Shirley, NY 11967, USA