

Recombinant Human CA10 Protein (Gln22-Asn300), C-His-tagged

Cat. No. CA10-0511H Lot. No. (See product label)

SPECIFICATION

Product Overview	Recombinant human CA10 (Gln22-Asn300) was fused with the C-terminal His tag and was expressed in Mammalian cells.
Species	Human
Source	Mammalian Cells
ProteinLength	Gln22-Asn300
Form	Lyophilized powder/frozen liquid
Molecular Mass	30.69 kDa
Purity	>90% as determined by SDS-PAGE
Notes	For research use only.
Storage	Use a manual defrost freezer and avoid repeated freeze thaw cycles. Store at 2 to 8 centigrade for one week. Store at -20 to -80 centigrade for twelve months from the date of receipt.
Storage Buffer	Supplied as solution form in PBS or lyophilized from PBS.
Reconstitution	Reconstitute in sterile water for a stock solution.

 Tel: 1-631-559-9269 1-516-512-3133

 Email: info@creative-biomart.com  Fax: 1-631-938-8127

 45-1 Ramsey Road, Shirley, NY 11967, USA

Shipping They are shipped out with dry ice/blue ice unless customers require otherwise.

GENE INFORMATION

Gene Name CA10 carbonic anhydrase X [Homo sapiens (human)]

Official Symbol CA10

Synonyms CA10; carbonic anhydrase X; carbonic anhydrase-related protein 10; CA RPX; CARPX; HUCEP 15; CARP X; CA-RP X; cerebral protein 15; cerebral protein-15; carbonic anhydrase-related protein X; CA-RPX; HUCEP-15;

Gene ID 56934

mRNA Refseq NM_001082533

Protein Refseq NP_001076002

MIM 604642

UniProt ID Q9NS85

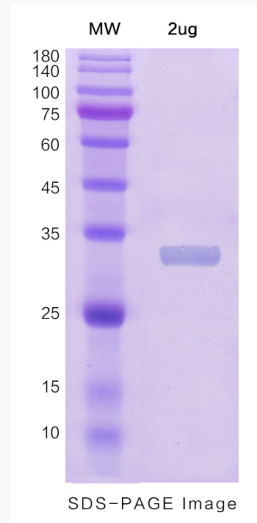
 Tel: 1-631-559-9269 1-516-512-3133

 Email: info@creative-biomart.com  Fax: 1-631-938-8127

 45-1 Ramsey Road, Shirley, NY 11967, USA



SDS-PAGE



Tel: 1-631-559-9269 1-516-512-3133

Email: info@creative-biomart.com Fax: 1-631-938-8127

45-1 Ramsey Road, Shirley, NY 11967, USA