

Active Recombinant Human CA10 protein, Fc-His-tagged

Cat. No. CA10-257H Lot. No. (See product label)

SPECIFICATION

Product Overview	Active Recombinant Human CA10 protein(NP_001076002.1) (Met 1-Asn 300) was expressed in HEK293, fused with the C-terminal polyhistidine-tagged Fc region of human IgG1 at the C-terminus.
Species	Human
Source	HEK293
ProteinLength	1-300 aa
Form	Lyophilized from sterile 100mM Glycine, 10mM NaCl, 50mM Tris, pH 7.5.
Bio-activity	Measured by its esterase activity. The specific activity is >50 pmoles/min/μg, as measured with 1 mM 4-Nitrophenyl acetate and 5 μg enzyme at 400 nm in 100 μL of 12.5 mM Tris, 75 mM NaCl, pH 7.5.
Molecular Mass	The recombinant human CARPX/Fc is a disulfide-linked homodimeric protein after removal of the signal peptide. The reduced monomer consists of 526 amino acids and migrates as an approximately 63 kDa band in SDS-PAGE under reducing conditions as predicted.
Endotoxin	< 1.0 EU per μg of the protein as determined by the LAL method.
Purity	> 97 % as determined by SDS-PAGE

 Tel: 1-631-559-9269 1-516-512-3133

 Email: info@creative-biomart.com  Fax: 1-631-938-8127

 45-1 Ramsey Road, Shirley, NY 11967, USA

Storage Store it under sterile conditions at -20°C to -80°C upon receiving. Recommend to aliquot the protein into smaller quantities for optimal storage. Avoid repeated freeze-thaw cycles.

Reconstitution It is recommended that sterile water be added to the vial to prepare a stock solution of 0.2 ug/ul. Centrifuge the vial at 4°C before opening to recover the entire contents.

GENE INFORMATION

Gene Name CA10 carbonic anhydrase X [Homo sapiens]

Official Symbol CA10

Synonyms CA10; carbonic anhydrase X; carbonic anhydrase-related protein 10; CA RPX; CARPX; HUCEP 15; CARP X; CA-RP X; cerebral protein 15; cerebral protein-15; carbonic anhydrase-related protein X; CA-RPX; HUCEP-15;

Gene ID 56934

mRNA Refseq NM_001082533

Protein Refseq NP_001076002

MIM 604642

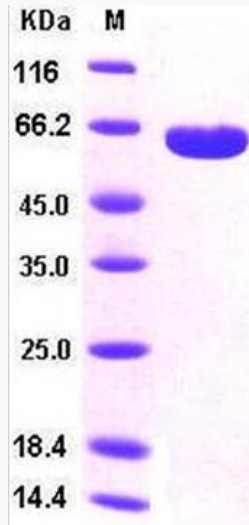
UniProt ID Q9NS85

 Tel: 1-631-559-9269 1-516-512-3133

 Email: info@creative-biomart.com  Fax: 1-631-938-8127

 45-1 Ramsey Road, Shirley, NY 11967, USA

SDS-PAGE



 Tel: 1-631-559-9269 1-516-512-3133

 Email: info@creative-biomart.com  Fax: 1-631-938-8127

 45-1 Ramsey Road, Shirley, NY 11967, USA