

Recombinant Human CA12 protein, His-tagged

Cat. No. CA12-1455H Lot. No. (See product label)

SPECIFICATION

Product Overview	Recombinant Human CA12 protein(O43570-1)(Ala25-Ser301), fused with C-terminal His tag, was expressed in HEK293.
Species	Human
Source	C-His
ProteinLength	Ala25-Ser301
Tag	C-His
Form	Lyophilized from 0.22µm filtered solution in PBS (pH 7.4). Normally 8% trehalose is added as protectant before lyophilization.
Bio-activity	
Molecular Mass	The protein has a predicted MW of 32.22 kDa. Due to glycosylation, the protein migrates to 40-50 kDa based on Tris-Bis PAGE result.
Endotoxin	Less than 1EU per µg by the LAL method.
Purity	> 95% as determined by Tris-Bis PAGE; > 95% as determined by HPLC.
Storage	Reconstituted protein stable at -80°C for 12 months, 4°C for 1 week. Use a manual defrost freezer and avoid repeated freeze-thaw cycles.

 Tel: 1-631-559-9269 1-516-512-3133

 Email: info@creative-biomart.com  Fax: 1-631-938-8127

 45-1 Ramsey Road, Shirley, NY 11967, USA

Reconstitution Centrifuge tubes before opening. Reconstituting to a concentration more than 100 µg/ml is recommended. Dissolve the lyophilized protein in distilled water.

GENE INFORMATION

Gene Name CA12 carbonic anhydrase XII [Homo sapiens]

Official Symbol CA12

Synonyms CA12; carbonic anhydrase XII; carbonic anhydrase 12; HsT18816; CA-XII; carbonic dehydratase; carbonate dehydratase XII; tumor antigen HOM-RCC-3.1.3; CAXII; FLJ20151;

Gene ID 771

mRNA Refseq NM_001218

Protein Refseq NP_001209

MIM 603263

UniProt ID O43570

 Tel: 1-631-559-9269 1-516-512-3133

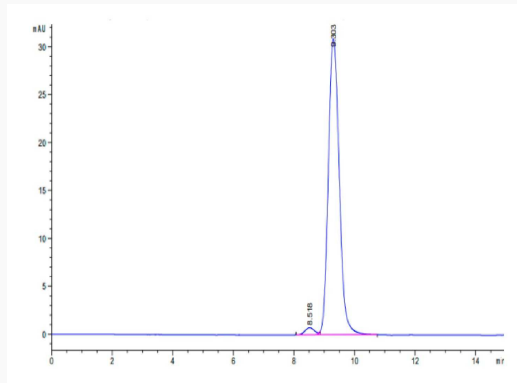
 Email: info@creative-biomart.com  Fax: 1-631-938-8127

 45-1 Ramsey Road, Shirley, NY 11967, USA

Tris-Bis PAGE



SEC-HPLC



 Tel: 1-631-559-9269 1-516-512-3133

 Email: info@creative-biomart.com  Fax: 1-631-938-8127

 45-1 Ramsey Road, Shirley, NY 11967, USA