

# Recombinant Full Length Human CA12 Protein, C-Flag-tagged

Cat. No. CA12-2169HFL Lot. No. (See product label)

## SPECIFICATION

<b>Product Overview</b>	Recombinant Full Length Human CA12 Protein, fused to Flag-tag at C-terminus, was expressed in Mammalian cells.
<b>Species</b>	Human
<b>Source</b>	Mammalian Cells
<b>Description</b>	Carbonic anhydrases (CAs) are a large family of zinc metalloenzymes that catalyze the reversible hydration of carbon dioxide. They participate in a variety of biological processes, including respiration, calcification, acid-base balance, bone resorption, and the formation of aqueous humor, cerebrospinal fluid, saliva, and gastric acid. This gene product is a type I membrane protein that is highly expressed in normal tissues, such as kidney, colon and pancreas, and has been found to be overexpressed in 10% of clear cell renal carcinomas. Three transcript variants encoding different isoforms have been identified for this gene.
<b>Form</b>	25 mM Tris HCl, pH 7.3, 100 mM glycine, 10% glycerol.
<b>Molecular Mass</b>	36.8 kDa
<b>AA Sequence</b>	MPRRSLHAAAVLLLVLKEQPSSPAPVNGSKWTYFGPDGENSWSKKYPSCGGLLQS PIDLHSDILQYDAS LTPLEFQGYNLSANKQFLLTNNGHSVKLNLPSDMHIQGLQSRYS SATQLHLHWGNPNDPHGSEHTVSGQHF AAELHIVHYNSDLYPDASTASNKSEGLA VLAVLIEMGSFNPSYDKIFSHLQHVKYKGQEA FVPGFNIEEL LPERTAEYYRYRGSLS TTPPCNPTVLWTVFRNPVQISQEQLLALETALYCTHMDDPSPREMINNFRQVQKF D

 Tel: 1-631-559-9269 1-516-512-3133

 Email: [info@creative-biomart.com](mailto:info@creative-biomart.com)  Fax: 1-631-938-8127

 45-1 Ramsey Road, Shirley, NY 11967, USA

ERLVYTSFSQVQVCTAAGLSLGIILSLALAGILGICIVVVVSIWLFRRKSIKKGDNKGVIIY  
KPKTKMET EAHA TRTRPLEQKLISEEDLAANDILDYKDDDDKV

<b>Purity</b>	> 80% as determined by SDS-PAGE and Coomassie blue staining.
<b>Stability</b>	Stable for 12 months from the date of receipt of the product under proper storage and handling conditions. Avoid repeated freeze-thaw cycles.
<b>Storage</b>	Store at -80 centigrade.
<b>Concentration</b>	>50 ug/mL as determined by microplate BCA method.
<b>Preparation</b>	Recombinant protein was captured through anti-DDK affinity column followed by conventional chromatography steps.
<b>Protein Families</b>	Druggable Genome, Transmembrane
<b>Protein Pathways</b>	Nitrogen metabolism
<b>Full Length</b>	Full L.

## GENE INFORMATION

<b>Gene Name</b>	CA12 carbonic anhydrase 12 [ Homo sapiens (human) ]
<b>Official Symbol</b>	CA12
<b>Synonyms</b>	CAXII; CA-XII; T18816; HsT18816
<b>Gene ID</b>	771

 Tel: 1-631-559-9269 1-516-512-3133

 Email: [info@creative-biomart.com](mailto:info@creative-biomart.com)  Fax: 1-631-938-8127

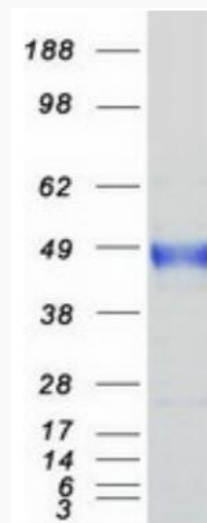
 45-1 Ramsey Road, Shirley, NY 11967, USA

mRNA Refseq [NM\\_001218.5](#)

Protein Refseq [NP\\_001209.1](#)

MIM [603263](#)

UniProt ID [O43570](#)



Coomassie blue staining of purified CA12 protein.

 Tel: 1-631-559-9269 1-516-512-3133

 Email: [info@creative-biomart.com](mailto:info@creative-biomart.com)  Fax: 1-631-938-8127

 45-1 Ramsey Road, Shirley, NY 11967, USA