

Recombinant Human CA13 Protein, GST-Tagged

Cat. No. CA13-0235H **Lot. No.** (See product label)

SPECIFICATION

Product Overview	Human CA13 full-length ORF (NP_940986.1, 1 a.a. - 262 a.a.) recombinant protein with GST-tag at N-terminal.
Species	Human
Source	Wheat Germ
Description	Carbonic anhydrases (CAs) are a family of zinc metalloenzymes. For background information on the CA family, see MIM 114800.[supplied by OMIM, Mar 2008]
Molecular Mass	55.8 kDa
AA Sequence	MSRLSWG YREHNGPIHWKEFFPIADGDQQSPIEIKTKEVKYDSSLRPLSIKYDPSSA KIISNSGHSFNVDFFDTENKSVLRGGPLTGSYRLRQVHLHWGSADDHGSEHIVDGV SYAAELHV VHWNSDKYPSFVEAAHEPDGLAVLGVFLQIGEPNSQLQKITDTLDSIKE KKGKQTRFTNFDLLSLLPPSWDYWTYPGSLTVPPLLESVTWIVLKQPINISSQQLAKFR SLLCTAEGEAAAFLVSNHRPPQPLKGRKVRASFH
Applications	Enzyme-linked Immunoabsorbent Assay Western Blot (Recombinant protein) Antibody Production Protein Array
Notes	Best use within three months from the date of receipt of this protein.

 Tel: 1-631-559-9269 1-516-512-3133

 Email: info@creative-biomart.com  Fax: 1-631-938-8127

 45-1 Ramsey Road, Shirley, NY 11967, USA

Storage Store at -80 centigrade. Aliquot to avoid repeated freezing and thawing.

Storage Buffer 50 mM Tris-HCl, 10 mM reduced Glutathione, pH=8.0 in the elution buffer.

GENE INFORMATION

Gene Name CA13 carbonic anhydrase XIII [Homo sapiens]

Official Symbol CA13

Synonyms CA13; carbonic anhydrase XIII; carbonic anhydrase 13; CAXIII; FLJ37995; MGC59868; CA-XIII; carbonate dehydratase XIII; FLJ36434;

Gene ID 377677

mRNA Refseq NM_198584

Protein Refseq NP_940986

MIM 611436

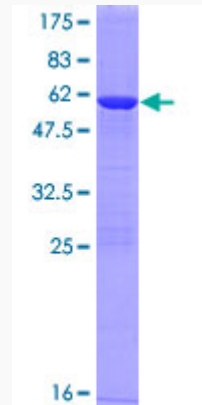
UniProt ID Q8N1Q1

 Tel: 1-631-559-9269 1-516-512-3133

 Email: info@creative-biomart.com  Fax: 1-631-938-8127

 45-1 Ramsey Road, Shirley, NY 11967, USA

**Quality Control
Testing**



12.5% SDS-PAGE Stained with Coomassie Blue.

 Tel: 1-631-559-9269 1-516-512-3133

 Email: info@creative-biomart.com  Fax: 1-631-938-8127

 45-1 Ramsey Road, Shirley, NY 11967, USA