

Recombinant Human CA14 Protein (Gly19-Met290), N-His-tagged

Cat. No. CA14-0138H Lot. No. (See product label)

SPECIFICATION

Product Overview	Recombinant human CA14 (Gly19-Met290) was fused with the N-terminal His tag and was expressed in E. coli.
Species	Human
Source	E.coli
ProteinLength	Gly19-Met290
Form	Lyophilized powder/frozen liquid
Molecular Mass	29.92 kDa
Purity	>90% as determined by SDS-PAGE
Notes	For research use only.
Storage	Use a manual defrost freezer and avoid repeated freeze thaw cycles. Store at 2 to 8 centigrade for one week. Store at -20 to -80 centigrade for twelve months from the date of receipt.
Storage Buffer	Supplied as solution form in PBS or lyophilized from PBS.
Reconstitution	Reconstitute in sterile water for a stock solution.

 Tel: 1-631-559-9269 1-516-512-3133

 Email: info@creative-biomart.com  Fax: 1-631-938-8127

 45-1 Ramsey Road, Shirley, NY 11967, USA

Shipping

They are shipped out with dry ice/blue ice unless customers require otherwise.

GENE INFORMATION**Gene Name**

CA14 carbonic anhydrase XIV [Homo sapiens (human)]

Official Symbol

CA14

Synonyms

CA14; carbonic anhydrase XIV; carbonic anhydrase 14; CA-XIV; carbonic dehydratase; carbonate dehydratase XIV; CAXiV;

Gene ID

23632

mRNA Refseq

NM_012113

Protein Refseq

NP_036245

MIM

604832

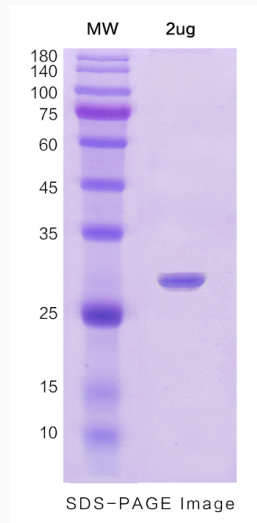
UniProt ID

Q9ULX7

 Tel: 1-631-559-9269 1-516-512-3133 Email: info@creative-biomart.com  Fax: 1-631-938-8127 45-1 Ramsey Road, Shirley, NY 11967, USA



SDS-PAGE



Tel: 1-631-559-9269 1-516-512-3133

Email: info@creative-biomart.com Fax: 1-631-938-8127

45-1 Ramsey Road, Shirley, NY 11967, USA