

Active Recombinant Human CA2 Protein

Cat. No. CA2-0237H **Lot. No.** (See product label)

SPECIFICATION

Product Overview	Human CA2 (NP_000058, 1 a.a. - 260 a.a.) full-length recombinant protein expressed in Escherichia coli.
Species	Human
Source	E.coli
Description	The protein encoded by this gene is one of several isozymes of carbonic anhydrase, which catalyzes reversible hydration of carbon dioxide. Defects in this enzyme are associated with osteopetrosis and renal tubular acidosis. Two transcript variants encoding different isoforms have been found for this gene. [provided by RefSeq, Jun 2014]
Form	Liquid
Bio-activity	Specific activity is 50-70 nmoles/min/ug and was obtained by measuring the increase in the amount of p-nitrophenol by its esterase activity. Specific activity is defined as the amount of p-nitrophenol that 1ug of enzyme can reduce at 25 centigrade for 1 minute.
Molecular Mass	29.2 kDa
AA Sequence	MSHHWGYGKHNGPEHWHKDFPIAKGERQSPVDIDTHTAKYDPSLKPLSVSYDQAT SLRILNNGHAFNVEFDDSDKAVLKGGLDGTYRLIQFHFHWGSLDGGQSEHTVVK KKYAAELHLVHWNTKYGDFGKAVQQPDGLAVLGLFLKVGSAKPGLQKVVDVLDLSIKT

 Tel: 1-631-559-9269 1-516-512-3133

 Email: info@creative-biomart.com  Fax: 1-631-938-8127

 45-1 Ramsey Road, Shirley, NY 11967, USA

KGKSADFTNFDPRGLLPESLDYWTPGSLTTPPLLECVTWIVLKEPISVSSEQVLKFR
KLNFNNGEGEPEELMVDNWRPAQPLKNRQIKASFK

Purity > 95% by SDS-PAGE

Applications Functional Study
SDS-PAGE

Storage Store at 4 centigrade for 1-2 weeks. For long term storage store at -20 centigrade or -80 centigrade. Aliquot to avoid repeated freezing and thawing.

Concentration 1 mg/mL

Storage Buffer In 20 mM Tris-HCl, 50 mM NaCl, pH 8.0 (1 mM dithiothreitol, 10% glycerol)

GENE INFORMATION

Gene Name CA2 carbonic anhydrase II [Homo sapiens]

Official Symbol CA2

Synonyms CA2; carbonic anhydrase II; carbonic anhydrase 2; CA II; CAII; Car2; CAC; carbonic anhydrase B; carbonic anhydrase C; carbonic dehydratase; carbonate dehydratase II; CA-II;

Gene ID 760

mRNA Refseq NM_000067

Protein Refseq NP_000058

 Tel: 1-631-559-9269 1-516-512-3133

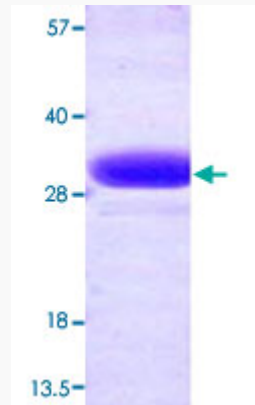
 Email: info@creative-biomart.com  Fax: 1-631-938-8127

 45-1 Ramsey Road, Shirley, NY 11967, USA

MIM 611492

UniProt ID P00918

**Quality Control
Testing**



Loading 3 μ g protein in 15% SDS-PAGE

Tel: 1-631-559-9269 1-516-512-3133

Email: info@creative-biomart.com Fax: 1-631-938-8127

45-1 Ramsey Road, Shirley, NY 11967, USA