

Recombinant Human CA2 Protein (Met1-Lys260), N-His-tagged

Cat. No. CA2-0615H Lot. No. (See product label)

SPECIFICATION

Product Overview	Recombinant human CA2 (Met1-Lys260) was fused with the N-His tag and was expressed in E. coli.
Species	Human
Source	E.coli
ProteinLength	Met1-Lys260
Form	Lyophilized powder/frozen liquid
Molecular Mass	31.56 kDa
Purity	>90% as determined by SDS-PAGE
Notes	For research use only.
Storage	Use a manual defrost freezer and avoid repeated freeze thaw cycles. Store at 2 to 8 centigrade for one week. Store at -20 to -80 centigrade for twelve months from the date of receipt.
Storage Buffer	0.01M PBS, pH 7.4, 0.02% NLS
Reconstitution	Reconstitute in sterile water for a stock solution.

 Tel: 1-631-559-9269 1-516-512-3133

 Email: info@creative-biomart.com  Fax: 1-631-938-8127

 45-1 Ramsey Road, Shirley, NY 11967, USA

Shipping

They are shipped out with dry ice/blue ice unless customers require otherwise.

GENE INFORMATION
Gene Name

CA2 carbonic anhydrase II [Homo sapiens (human)]

Official Symbol

CA2

Synonyms

CA2; carbonic anhydrase II; carbonic anhydrase 2; CA II; CAII; Car2; CAC; carbonic anhydrase B; carbonic anhydrase C; carbonic dehydratase; carbonate dehydratase II; CA-II;

Gene ID

760

mRNA Refseq

NM_000067

Protein Refseq

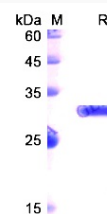
NP_000058

MIM

611492

UniProt ID

P00918

SDS-PAGE


 Tel: 1-631-559-9269 1-516-512-3133

 Email: info@creative-biomart.com  Fax: 1-631-938-8127

 45-1 Ramsey Road, Shirley, NY 11967, USA