

Recombinant Human CA2 Protein, MYC/DDK-tagged, C13 and N15-labeled

Cat. No. CA2-201H **Lot. No.** (See product label)

SPECIFICATION

Product Overview	CA2 MS Standard C13 and N15-labeled recombinant protein (NP_000058) with a C-terminal MYC/DDK tag, was expressed in HEK293 cells.
Species	Human
Source	HEK293
Description	The protein encoded by this gene is one of several isozymes of carbonic anhydrase, which catalyzes reversible hydration of carbon dioxide. Defects in this enzyme are associated with osteopetrosis and renal tubular acidosis. Two transcript variants encoding different isoforms have been found for this gene. [provided by RefSeq, Jun 2014]
Molecular Mass	29.2 kDa
AA Sequence	MSHHWGYGKHNGPEHWHKDFPIAKGERQSPVDIDTHTAKYDPSLKPLSVSYDQAT SLRILNNGHAFNVEFDDSQDKAVLKGGLDGTYRLIQFHFHWGSLDGQGSEHTVDK KKYAAELHLVHWNTKYGDFGKAVQQPDGLAVLGIFLKVGS AKPGLQKVVDVLDSIKT KGKSADFTNFAARGLLPESLDYWTYPGSLTTPPLECVTWIVLKEPISVSSEQVLKFR KLNFN GEGEPEELMVDNWRPAQPLKNRQIKASFKTRTRPLEQKLISEEDLAANDILD YKDDDDKV
Purity	> 80% as determined by SDS-PAGE and Coomassie blue staining

 Tel: 1-631-559-9269 1-516-512-3133

 Email: info@creative-biomart.com  Fax: 1-631-938-8127

 45-1 Ramsey Road, Shirley, NY 11967, USA

Stability	Stable for 3 months from receipt of products under proper storage and handling conditions.
Storage	Store at -80 centigrade. Avoid repeated freeze-thaw cycles.
Concentration	50 µg/mL as determined by BCA
Storage Buffer	100 mM glycine, 25 mM Tris-HCl, pH 7.3.

GENE INFORMATION

Gene Name	CA2 carbonic anhydrase II [Homo sapiens (human)]
Official Symbol	CA2
Synonyms	CA2; carbonic anhydrase II; carbonic anhydrase 2; CA II; CAII; Car2; CAC; carbonic anhydrase B; carbonic anhydrase C; carbonic dehydratase; carbonate dehydratase II; CA-II;
Gene ID	760
mRNA Refseq	NM_000067
Protein Refseq	NP_000058
MIM	611492
UniProt ID	P00918

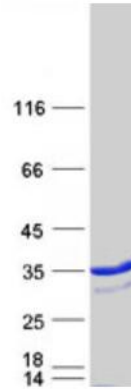
 Tel: 1-631-559-9269 1-516-512-3133

 Email: info@creative-biomart.com  Fax: 1-631-938-8127

 45-1 Ramsey Road, Shirley, NY 11967, USA



SDS-PAGE



Tel: 1-631-559-9269 1-516-512-3133

Email: info@creative-biomart.com Fax: 1-631-938-8127

45-1 Ramsey Road, Shirley, NY 11967, USA