

Active Recombinant Human CA2 protein, His-tagged

Cat. No. CA2-864H Lot. No. (See product label)

SPECIFICATION

Product Overview	Active Recombinant Human CA2 protein(NP_000058.1) (Met 1-Lys 260) was expressed in E. coli, with a polyhistide tag at the C-terminus.
Species	Human
Source	E. coli
ProteinLength	1-260 aa
Form	Lyophilized from sterile 20mM Tris 0.5M NaCl, pH 8.0.
Bio-activity	Measured by its esterase activity. The specific activity is >150 pmoles/min/μg.
Molecular Mass	The recombinant human CA2 consisting of 266 amino acids and has a calculated molecular mass of 30 kDa as estimated in SDS-PAGE under reducing conditions.
Purity	> 96 % as determined by SDS-PAGE
Storage	Store it under sterile conditions at -20°C to -80°C upon receiving. Recommend to aliquot the protein into smaller quantities for optimal storage. Avoid repeated freeze-thaw cycles.
Reconstitution	It is recommended that sterile water be added to the vial to prepare a stock solution of 0.2 ug/ul. Centrifuge the vial at 4°C before opening to recover the entire contents.

 Tel: 1-631-559-9269 1-516-512-3133

 Email: info@creative-biomart.com  Fax: 1-631-938-8127

 45-1 Ramsey Road, Shirley, NY 11967, USA



GENE INFORMATION

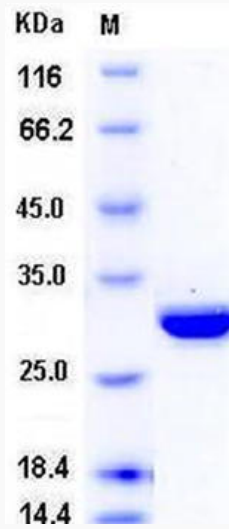
Gene Name	CA2 carbonic anhydrase II [Homo sapiens]
Official Symbol	CA2
Synonyms	CA2; carbonic anhydrase II; carbonic anhydrase 2; CA II; CAII; Car2; CAC; carbonic anhydrase B; carbonic anhydrase C; carbonic dehydratase; carbonate dehydratase II; CA-II;
Gene ID	760
mRNA Refseq	NM_000067
Protein Refseq	NP_000058
MIM	611492
UniProt ID	P00918

 Tel: 1-631-559-9269 1-516-512-3133

 Email: info@creative-biomart.com  Fax: 1-631-938-8127

 45-1 Ramsey Road, Shirley, NY 11967, USA

SDS-PAGE



 Tel: 1-631-559-9269 1-516-512-3133

 Email: info@creative-biomart.com  Fax: 1-631-938-8127

 45-1 Ramsey Road, Shirley, NY 11967, USA