

## Recombinant Human CA5A protein

Cat. No. CA5A-8564H Lot. No. (See product label)

### SPECIFICATION

<b>Product Overview</b>	Recombinant Human CA5A protein(P35218)(39-305aa) was expressed in HEK293.
<b>Species</b>	Human
<b>Source</b>	HEK293
<b>ProteinLength</b>	39-305aa
<b>Tag</b>	Non
<b>Form</b>	If the delivery form is liquid, the default storage buffer is Tris/PBS-based buffer, 5%-50% glycerol. If the delivery form is lyophilized powder, the buffer before lyophilization is Tris/PBS-based buffer, 6% Trehalose, pH 8.0.
<b>Molecular Mass</b>	30.6 kDa
<b>Purity</b>	Greater than 85% as determined by SDS-PAGE.
<b>Storage</b>	Store at -20°C/-80°C upon receipt, aliquoting is necessary for mutiple use. Avoid repeated freeze-thaw cycles.
<b>Reconstitution</b>	We recommend that this vial be briefly centrifuged prior to opening to bring the contents to the bottom. Please reconstitute protein in deionized sterile water to a concentration of 0.1-1.0 mg/mL. We recommend to add 5-50% of glycerol (final concentration) and aliquot for long-term storage at -20°C/-80°C.

 Tel: 1-631-559-9269 1-516-512-3133

 Email: [info@creative-biomart.com](mailto:info@creative-biomart.com)  Fax: 1-631-938-8127

 45-1 Ramsey Road, Shirley, NY 11967, USA

**AA Sequence**

CAWQTSNNTLHPLWTVPVSVPGGTRQSPINIQWRDSVYDPQLKPLRVSYEAASCLY  
 IWNTGYLFQVEFDDATEASGISGGPLENHRYLKQFHFHWGAVNEGGSEHTVDGHA  
 YPAELHLVHWNSVKYQNYKEAVVGENGLAVIGVFLKLGAAHHQTLQRLVDILPEIKHK  
 DARAAMRPFDPSTLLPTCWDYWTYAGSLTTPPLTESVTWIIQKEPVEVAPSQLSAFR  
 TLLFSALGEEEEKMMVNNYRPLQPLMNRKVVASFQATNEGTRS

## GENE INFORMATION

**Gene Name** [CA5A carbonic anhydrase VA, mitochondrial \[ Homo sapiens \]](#)

**Official Symbol** [CA5A](#)

**Synonyms** CA5A; carbonic anhydrase VA, mitochondrial; CA5; carbonic anhydrase 5A, mitochondrial; CAV; CAVA; CA-VA; carbonic dehydratase; carbonate dehydratase VA; carbonic anhydrase V, mitochondrial;

**Gene ID** [763](#)

**mRNA Refseq** [NM\\_001739](#)

**Protein Refseq** [NP\\_001730](#)

**MIM** [114761](#)

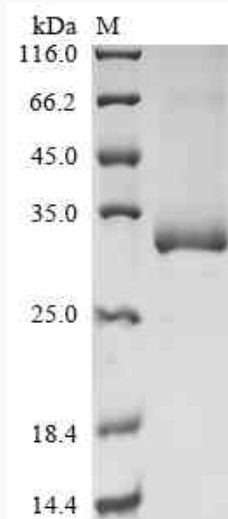
**UniProt ID** [P35218](#)

 Tel: 1-631-559-9269 1-516-512-3133

 Email: [info@creative-biomart.com](mailto:info@creative-biomart.com)  Fax: 1-631-938-8127

 45-1 Ramsey Road, Shirley, NY 11967, USA

**SDS-PAGE**



 Tel: 1-631-559-9269 1-516-512-3133

 Email: [info@creative-biomart.com](mailto:info@creative-biomart.com)  Fax: 1-631-938-8127

 45-1 Ramsey Road, Shirley, NY 11967, USA