

## Recombinant Human CA6 Protein, GST-Tagged

**Cat. No.** CA6-0245H    **Lot. No.** (See product label)

### SPECIFICATION

<b>Product Overview</b>	Human CA6 full-length ORF (NP_001206.2, 1 a.a. - 308 a.a.) recombinant protein with GST-tag at N-terminal.
<b>Species</b>	Human
<b>Source</b>	Wheat Germ
<b>Description</b>	The protein encoded by this gene is one of several isozymes of carbonic anhydrase. This protein is found only in salivary glands and saliva and protein may play a role in the reversible hydration of carbon dioxide though its function in saliva is unknown. [provided by RefSeq, Jul 2008]
<b>Molecular Mass</b>	61.8 kDa
<b>AA Sequence</b>	MRALVLLLSLFLGGQAQHVSDWTYSEGALDEAHWPQHYPACGGQRQSPINLQRT KVRYNPSLKGLNMTGYETQAGEFPMVNNGHTVQISLPSTMRMTVADGTVYIAQQM HFHWGGASSEISGSEHTVDGIRHVIEIHIVHYNSKYKSYDIAQDAPDGLAVLAAFVEV KNYPENTYYSNFISHLANIKYPGQRRTTLTGLDVQDMLPRNLQHYYTYHGSLTTPPCT ENVHWFVLADFVKLSRTQVWKLNSLLDHRNKTIHNDYRRTQPLNHRVVESNFPNQ EYTLGSEFQFYLHKIEEILDYLRRALN
<b>Applications</b>	Enzyme-linked Immunoabsorbent Assay Western Blot (Recombinant protein) Antibody Production Protein Array

 Tel: 1-631-559-9269    1-516-512-3133

 Email: [info@creative-biomart.com](mailto:info@creative-biomart.com)     Fax: 1-631-938-8127

 45-1 Ramsey Road, Shirley, NY 11967, USA

<b>Notes</b>	Best use within three months from the date of receipt of this protein.
<b>Storage</b>	Store at -80 centigrade. Aliquot to avoid repeated freezing and thawing.
<b>Storage Buffer</b>	50 mM Tris-HCl, 10 mM reduced Glutathione, pH=8.0 in the elution buffer.

## GENE INFORMATION

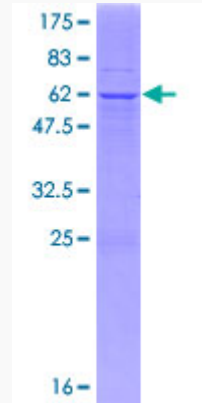
<b>Gene Name</b>	CA6 carbonic anhydrase VI [ Homo sapiens ]
<b>Official Symbol</b>	CA6
<b>Synonyms</b>	CA6; carbonic anhydrase VI; carbonic anhydrase 6; carbonate dehydratase VI; salivary carbonic anhydrase; secreted carbonic anhydrase; CA-VI; GUSTIN; MGC21256;
<b>Gene ID</b>	765
<b>mRNA Refseq</b>	NM_001215
<b>Protein Refseq</b>	NP_001206
<b>MIM</b>	114780
<b>UniProt ID</b>	P23280

 Tel: 1-631-559-9269 1-516-512-3133

 Email: [info@creative-biomart.com](mailto:info@creative-biomart.com)  Fax: 1-631-938-8127

 45-1 Ramsey Road, Shirley, NY 11967, USA

**Quality Control  
Testing**



12.5% SDS-PAGE Stained with Coomassie Blue.

 Tel: 1-631-559-9269 1-516-512-3133

 Email: [info@creative-biomart.com](mailto:info@creative-biomart.com)  Fax: 1-631-938-8127

 45-1 Ramsey Road, Shirley, NY 11967, USA