

Active Recombinant Human CA9 Protein, His-tagged

Cat. No. CA9-255H Lot. No. (See product label)

SPECIFICATION

Product Overview	Active Recombinant Human CA9 Protein(NP_001207.2) (Met 1-Asp 414) was expressed in Human Cells with a polyhistidine tag at the C-terminus.
Species	Human
Source	Human Cells
ProteinLength	1-414 aa
Form	Lyophilized from sterile PBS, pH 7.4.
Bio-activity	Measured by its esterase activity. The specific activity is >30 pmoles/min/μg, as measured with 1 mM 4-Nitrophenyl acetate and 2.5 μg enzyme at 400 nm in 100 μL of 12.5 mM Tris, 75 mM NaCl, pH 7.5.
Molecular Mass	The recombinant human CA9 consists of 388 amino acids and predicts a molecular mass of 42.5 kDa. As a result of glycosylation, rhCA9 migrates with apparent molecular mass of 48 kDa in SDS-PAGE under reducing conditions.
Endotoxin	< 1.0 EU per μg of the protein as determined by the LAL method.
Purity	> 95 % as determined by SDS-PAGE
Storage	Store it under sterile conditions at -20°C to -80°C upon receiving. Recommend to aliquot the protein into smaller quantities for optimal storage. Avoid repeated freeze-

 Tel: 1-631-559-9269 1-516-512-3133

 Email: info@creative-biomart.com  Fax: 1-631-938-8127

 45-1 Ramsey Road, Shirley, NY 11967, USA

thaw cycles.

Reconstitution

It is recommended that sterile water be added to the vial to prepare a stock solution of 0.2 ug/ul. Centrifuge the vial at 4°C before opening to recover the entire contents.

GENE INFORMATION

Gene Name CA9 carbonic anhydrase IX [Homo sapiens]

Official Symbol CA9

Synonyms

CA9; carbonic anhydrase IX; carbonic anhydrase 9; CAIX; carbonic dehydratase; MN; RCC associated protein G250; pMW1; CA-IX; P54/58N; membrane antigen MN; carbonate dehydratase IX; RCC-associated antigen G250; RCC-associated protein G250; renal cell carcinoma-associated antigen G250;

Gene ID 768

mRNA Refseq NM_001216

Protein Refseq NP_001207

MIM 603179

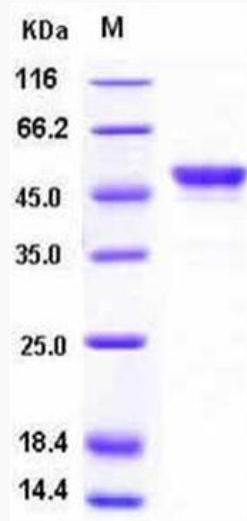
UniProt ID Q16790

 Tel: 1-631-559-9269 1-516-512-3133

 Email: info@creative-biomart.com  Fax: 1-631-938-8127

 45-1 Ramsey Road, Shirley, NY 11967, USA

SDS-PAGE



 Tel: 1-631-559-9269 1-516-512-3133

 Email: info@creative-biomart.com  Fax: 1-631-938-8127

 45-1 Ramsey Road, Shirley, NY 11967, USA