

## Recombinant Human CA9 protein, His-Avi-tagged

**Cat. No.** CA9-790H    **Lot. No.** (See product label)

### SPECIFICATION

<b>Product Overview</b>	Recombinant Human CA9 protein(Q16790)(Gln38-Asp414), fused with C-terminal His and Avi tag, was expressed in HEK293.
<b>Species</b>	Human
<b>Source</b>	HEK293
<b>ProteinLength</b>	Gln38-Asp414
<b>Tag</b>	C-His-Avi
<b>Form</b>	Lyophilized from 0.22µm filtered solution in 50mM Tris, 150mM NaCl (pH 7.4). Normally 8% trehalose is added as protectant before lyophilization.
<b>Bio-activity</b>	Immobilized Human CA9, His Tag at 1 µg/ml (100 µl/Well) on the plate. Dose response curve for Anti-CA9 Antibody, hFc Tag with the EC50 of 7.8 ng/ml determined by ELISA (QC Tst).
<b>Molecular Mass</b>	The protein has a predicted MW of 43.7 kDa. Due to glycosylation, the protein migrates to 50-60 kDa based on Tris-Bis PAGE result.
<b>Endotoxin</b>	Less than 1EU per µg by the LAL method.
<b>Purity</b>	> 95% as determined by Tris-Bis PAGE; > 95% as determined by HPLC

 Tel: 1-631-559-9269    1-516-512-3133

 Email: [info@creative-biomart.com](mailto:info@creative-biomart.com)     Fax: 1-631-938-8127

 45-1 Ramsey Road, Shirley, NY 11967, USA

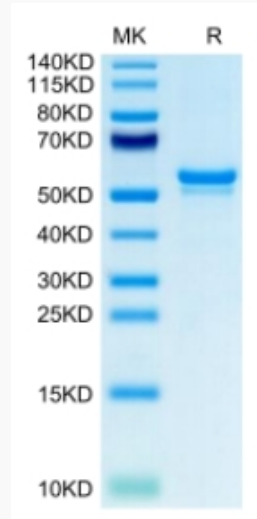
<b>Storage</b>	Reconstituted protein stable at -80°C for 12 months, 4°C for 1 week. Use a manual defrost freezer and avoid repeated freeze-thaw cycles.
<b>Reconstitution</b>	Centrifuge tubes before opening. Reconstituting to a concentration more than 100 µg/ml is recommended. Dissolve the lyophilized protein in distilled water.
<b>GENE INFORMATION</b>	
<b>Gene Name</b>	CA9 carbonic anhydrase IX [ Homo sapiens ]
<b>Official Symbol</b>	CA9
<b>Synonyms</b>	CA9; carbonic anhydrase IX; carbonic anhydrase 9; CAIX; carbonic dehydratase; MN; RCC associated protein G250; pMW1; CA-IX; P54/58N; membrane antigen MN; carbonate dehydratase IX; RCC-associated antigen G250; RCC-associated protein G250; renal cell carcinoma-associated antigen G250;
<b>Gene ID</b>	768
<b>mRNA Refseq</b>	NM_001216
<b>Protein Refseq</b>	NP_001207
<b>MIM</b>	603179
<b>UniProt ID</b>	Q16790

 Tel: 1-631-559-9269 1-516-512-3133

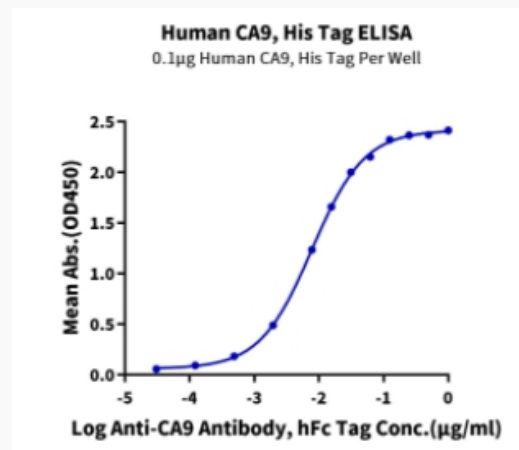
 Email: [info@creative-biomart.com](mailto:info@creative-biomart.com)  Fax: 1-631-938-8127

 45-1 Ramsey Road, Shirley, NY 11967, USA

**Tris-Bis PAGE**



**ELISA Data**



Tel: 1-631-559-9269 1-516-512-3133

Email: [info@creative-biomart.com](mailto:info@creative-biomart.com) Fax: 1-631-938-8127

45-1 Ramsey Road, Shirley, NY 11967, USA