

## Active Recombinant Human CA9 protein, hFc-tagged

Cat. No. CA9-890H Lot. No. (See product label)

### SPECIFICATION

<b>Product Overview</b>	Active Recombinant Human CA9 protein(Q16790)(Gln38-Asp414) is expressed from HEK293 with hFc (IgG1) tag at the C-terminus.
<b>Species</b>	Human
<b>Source</b>	HEK293
<b>ProteinLength</b>	38-414 aa
<b>Form</b>	Lyophilized from 0.22 µm filtered solution in PBS (pH 7.4).
<b>Bio-activity</b>	Immobilized Human CA9, hFc Tag at 1µg/ml (100µl/well) on the plate. Dose response curve for Biotinylated Anti-CA9 Antibody, hFc Tag with the EC50 of 7.4ng/ml determined by ELISA.
<b>Molecular Mass</b>	The protein has a predicted MW of 66.91 kDa. Due to glycosylation, the protein migrates to 70-80 kDa based on Bis-Tris PAGE result.
<b>Endotoxin</b>	Less than 1 EU per µg by the LAL method.
<b>Purity</b>	> 95% as determined by Bis-Tris PAGE > 95% as determined by HPLC
<b>Storage</b>	-20 to -80°C for 12 months as supplied from date of receipt. -80°C for 3 months after reconstitution. Recommend to aliquot the protein into smaller quantities for optimal storage. Please minimize freeze-thaw cycles.

 Tel: 1-631-559-9269 1-516-512-3133

 Email: [info@creative-biomart.com](mailto:info@creative-biomart.com)  Fax: 1-631-938-8127

 45-1 Ramsey Road, Shirley, NY 11967, USA

**Reconstitution**      Dissolve the lyophilized protein in distilled water.

## GENE INFORMATION

**Gene Name**      [CA9 carbonic anhydrase IX \[ Homo sapiens \]](#)

**Official Symbol**      [CA9](#)

**Synonyms**      CA9; carbonic anhydrase IX; carbonic anhydrase 9; CAIX; carbonic dehydratase; MN; RCC associated protein G250; pMW1; CA-IX; P54/58N; membrane antigen MN; carbonate dehydratase IX; RCC-associated antigen G250; RCC-associated protein G250; renal cell carcinoma-associated antigen G250;

**Gene ID**      [768](#)

**mRNA Refseq**      [NM\\_001216](#)

**Protein Refseq**      [NP\\_001207](#)

**MIM**      [603179](#)

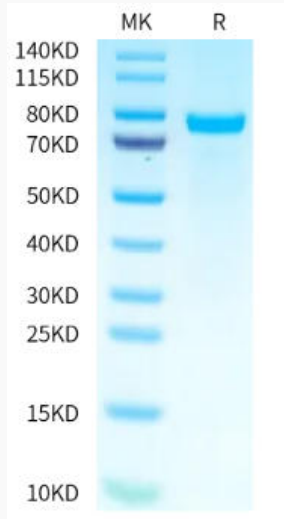
**UniProt ID**      [Q16790](#)

 Tel: 1-631-559-9269    1-516-512-3133

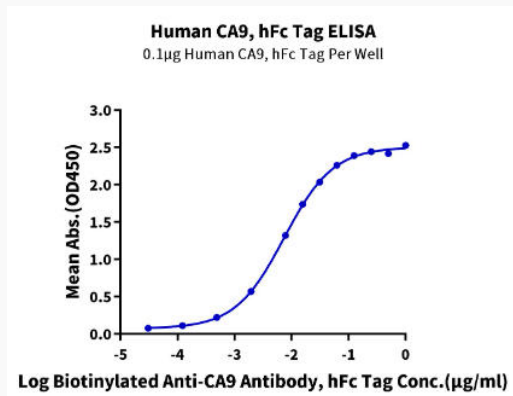
 Email: [info@creative-biomart.com](mailto:info@creative-biomart.com)     Fax: 1-631-938-8127

 45-1 Ramsey Road, Shirley, NY 11967, USA

**Bis-Tris PAGE**



**ELISA Data**



 Tel: 1-631-559-9269 1-516-512-3133

 Email: [info@creative-biomart.com](mailto:info@creative-biomart.com)  Fax: 1-631-938-8127

 45-1 Ramsey Road, Shirley, NY 11967, USA