

## Mouse Anti-Human SERPINB5 Monoclonal Antibody

**Cat. No.** CAB-865MH    **Lot. No.** (See product label)

### SPECIFICATION

<b>Species</b>	Human
<b>Source</b>	Mouse
<b>Antigen Information</b>	Serine (or cysteine) proteinase inhibitor clade B (ovalbumin) member 5, also known as Maspin, is a tumor suppressor protein of serine proteinase inhibitor family. It plays an essential role in embryonic development through critical roles in cell adhesion. Also, it is present in normal breast and prostatic epithelial cells but downregulated in the respective carcinomas.
<b>Immunogen</b>	Recombinant Maspin (1-375aa) purified from E. coli.
<b>Isotype</b>	Mouse IgG2b heavy chain and light chain.
<b>Clone</b>	Anti-human Maspin mAb, clone AT2N6, is derived from hybridization of mouse F0 myeloma cells with spleen cells from BALB/c mice immunized with a recombinant human Maspin protein.
<b>Concentration</b>	1mg/ml.
<b>Form</b>	Liquid. In Phosphate-Buffered Saline (pH 7.4) with 0.1% Sodium Azide.
<b>Application</b>	ELISA, WB, Immunofluorescence.
<b>Storage</b>	Can be stored at +4°C short term (1-2 weeks). For long term storage, aliquot and

 Tel: 1-631-559-9269    1-516-512-3133

 Email: [info@creative-biomart.com](mailto:info@creative-biomart.com)     Fax: 1-631-938-8127

 45-1 Ramsey Road, Shirley, NY 11967, USA

store at -20°C or -70°C. Avoid repeated freezing and thawing cycles.

**Usage**

The antibody has been tested by ELISA, Western blot analysis and Immunofluorescence analysis to assure specificity and reactivity. Since application varies, however, each investigation should be titrated by the reagent to obtain optimal results. Recommended dilution range for Western blot analysis is 1:1000 ~ 2000. Recommended starting dilution is 1:1000.

**Western Blot Analysis**

Cell lysates of HeLa(20ug) were resolved by SDS-PAGE, transferred to NC membrane and probed with anti-human Maspin (1:1000). Proteins were visualized using a goat anti-mouse secondary antibody conjugated to HRP and an ECL detection system.

**Immunofluorescence Analysis**

Immunofluorescence of human HeLa cells stained with PI (Red) and monoclonal anti-Maspin antibody (1:500) with Alexa 488 (Green).

## GENE INFORMATION

**Gene Name**

[SERPINB5 serpin peptidase inhibitor, clade B \(ovalbumin\), member 5 \[ Homo sapiens \]](#)

**Synonyms**

serpin peptidase inhibitor, clade B (ovalbumin), member 5; PI5; maspin; SERPINB5; serine (or cysteine) proteinase inhibitor, clade B (ovalbumin), member 5; protease inhibitor 5 (maspin); Maspin; Protease inhibitor 5

**Gene ID**

[5268](#)

**mRNA Refseq**

[NM\\_002639](#)

**Protein Refseq**

[NP\\_002630](#)

**MIM**

[154790](#)

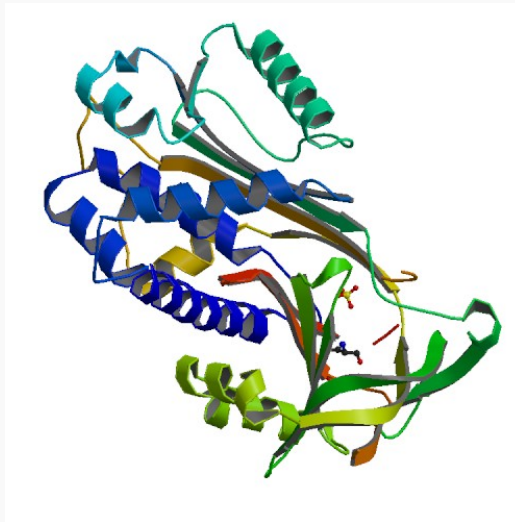
 Tel: 1-631-559-9269 1-516-512-3133

 Email: [info@creative-biomart.com](mailto:info@creative-biomart.com)  Fax: 1-631-938-8127

 45-1 Ramsey Road, Shirley, NY 11967, USA

<b>UniProt ID</b>	P36952
<b>Chromosome Location</b>	18q21.3
<b>Pathway</b>	p53 signaling pathway
<b>Function</b>	serine-type endopeptidase inhibitor activity; protein binding

PDB rendering based on 1wz9.



 Tel: 1-631-559-9269 1-516-512-3133

 Email: [info@creative-biomart.com](mailto:info@creative-biomart.com)  Fax: 1-631-938-8127

 45-1 Ramsey Road, Shirley, NY 11967, USA