

Mouse anti-Human IgG Monoclonal Antibody

Cat. No. CAB069 Lot. No. (See product label)

SPECIFICATION

Species Human

Source Mouse

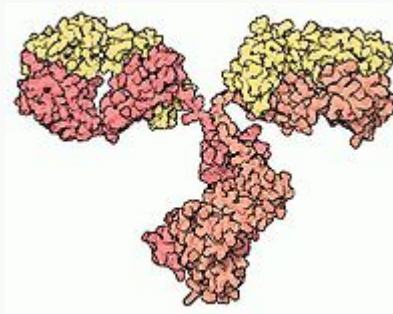
Antigen Information Immunoglobulin G (IgG) is a monomeric immunoglobulin, built of two heavy chains γ and two light chains. Each IgG has two antigen binding sites. It is the most abundant immunoglobulin and is approximately equally distributed in blood and in tissue liquids, constituting 75% of serum immunoglobulins in humans. IgG molecules are synthesised and secreted by plasma B cells

concentration 100g/0.2ml 500g/1ml

Application WB=1:100 Elisa =1:500-1000 IP=1:50-100 IHC=1:200-500

Storage Lyophilized: store at 4°C. After reconstitution, if not intended for use within a month, aliquot and store at -20°C.

two heavy chains are seen in red, the two light chains are yellow (PDB molecule of the month)



Tel: 1-631-559-9269 1-516-512-3133

Email: info@creative-biomart.com Fax: 1-631-938-8127

45-1 Ramsey Road, Shirley, NY 11967, USA