

## Recombinant Human CAB39 Protein, His-Tagged

Cat. No. CAB39-0251H Lot. No. (See product label)

### SPECIFICATION

<b>Product Overview</b>	Human CAB39 (NP_057373, 1 a.a. - 341 a.a.) full-length recombinant protein with His tag expressed in Escherichia coli.
<b>Species</b>	Human
<b>Source</b>	E.coli
<b>Description</b>	CAB39 (Calcium Binding Protein 39) is a Protein Coding gene. Among its related pathways are RET signaling and Innate Immune System. GO annotations related to this gene include binding and kinase binding. An important paralog of this gene is CAB39L.
<b>Form</b>	Liquid
<b>Molecular Mass</b>	42 kDa
<b>AA Sequence</b>	<p>MGSSHHHHHHSSGLVPRGSHMPFPFGKSHKSPADIVKNLKESMAVLEKQDISDKKA            EKATEEVSKNLVAMKEILYGTNEKEPQTEAVAQLAQELYNSGLLSTLVADLQLIDFEG            KKDVAQIFNNILRRQIGTRTPTVEYICTQQNILFMLLKGYESPEIALNCGIMLRECIRHE            PLAKIILWSEQFYDFFRYVEMSTFDIASDAFATFKDLLTRHKLLSAEFLEQHYDRFFSE            YEKLLHSENYVTKRQSLKLLGELLLDRHNFTIMTKYISKPENLKLMMNLLRDKSRNIQ            FEAHFVFKVFNANPNKTQPILDILLKNQAKLIEFLSKFQNDRTEDQFNDEKTYLVKQI            RDLKRPAQQEA</p>
<b>Purity</b>	> 90% by SDS-PAGE

 Tel: 1-631-559-9269 1-516-512-3133

 Email: [info@creative-biomart.com](mailto:info@creative-biomart.com)  Fax: 1-631-938-8127

 45-1 Ramsey Road, Shirley, NY 11967, USA

<b>Applications</b>	SDS-PAGE
<b>Storage</b>	Store at 4 centigrade for 1-2 weeks. For long term storage store at -20 centigrade or -80 centigrade. Aliquot to avoid repeated freezing and thawing.
<b>Concentration</b>	1 mg/mL
<b>Storage Buffer</b>	In 20 mM Tris-HCl, pH 8.0 (1 mM dithiothreitol, 10% glycerol)

## GENE INFORMATION

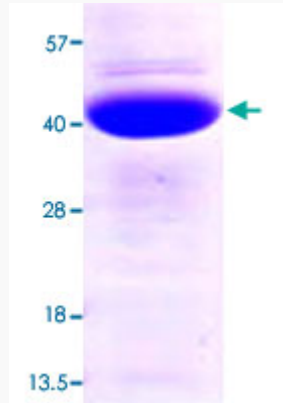
<b>Gene Name</b>	CAB39 calcium binding protein 39 [ Homo sapiens ]
<b>Official Symbol</b>	CAB39
<b>Synonyms</b>	CAB39; calcium binding protein 39; calcium-binding protein 39; CGI 66; MO25; MO25alpha; CGI-66; FLJ22682;
<b>Gene ID</b>	51719
<b>mRNA Refseq</b>	NM_001130849
<b>Protein Refseq</b>	NP_001124321
<b>MIM</b>	612174
<b>UniProt ID</b>	Q9Y376

 Tel: 1-631-559-9269 1-516-512-3133

 Email: [info@creative-biomart.com](mailto:info@creative-biomart.com)  Fax: 1-631-938-8127

 45-1 Ramsey Road, Shirley, NY 11967, USA

**Quality Control  
Testing**



Loading 3  $\mu$ g protein in 15% SDS-PAGE

 Tel: 1-631-559-9269 1-516-512-3133

 Email: [info@creative-biomart.com](mailto:info@creative-biomart.com)  Fax: 1-631-938-8127

 45-1 Ramsey Road, Shirley, NY 11967, USA