

Recombinant Human Calcium Binding Protein 39, GST-tagged

Cat. No. CAB39-1471H Lot. No. (See product label)

SPECIFICATION

Product Overview	Recombinant full-length human MO25alpha was expressed by baculovirus in Sf9 insect cells using an N-terminal GST tag. MW = 63kDa.
Species	Human
Source	Sf9 Cells
Description	MO25 α (mouse protein 25 alpha) is a 40-kDa protein that interacts with the STE20-related adaptor-alpha (STRAD α) pseudo kinase to form a regulatory complex capable of stimulating the activity of the LKB1 tumor suppressor protein kinase. LKB1 plays a critical role in cell proliferation, polarity and energy metabolism. LKB1 is mutated in the inherited Peutz-Jeghers cancer syndrome (PJS). MO25 α binds directly to a conserved Trp-Glu-Phe sequence at the STRAD α C terminus, and markedly enhances the binding of STRAD α to LKB1 thereby increasing LKB1.
Sequence	Full-length.
Applications	Kinase Assay, Western Blot.
Storage And Stability	Store product at -70°C. For optimal storage, aliquot target into smaller quantities after centrifugation and store at recommended temperature. For most favorable performance, avoid repeated handling and multiple freeze/thaw cycles.

GENE INFORMATION

 Tel: 1-631-559-9269 1-516-512-3133

 Email: info@creative-biomart.com  Fax: 1-631-938-8127

 45-1 Ramsey Road, Shirley, NY 11967, USA



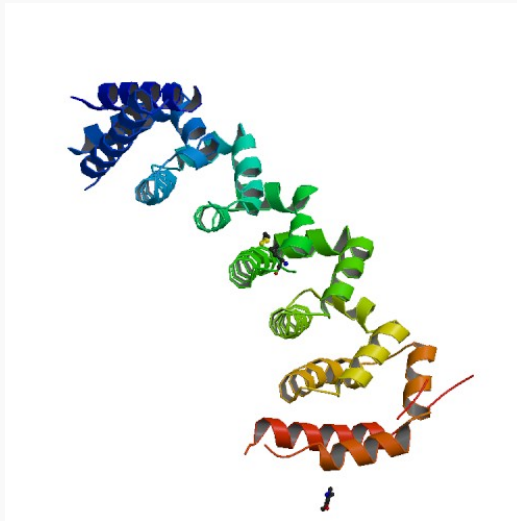
Gene Name	CAB39 calcium binding protein 39 [Homo sapiens]
Synonyms	CAB39; calcium binding protein 39; MO25; CGI-66; FLJ22682; Protein Mo25
Gene ID	51719
mRNA Refseq	NM_001130849
Protein Refseq	NP_001124321
MIM	612174
UniProt ID	Q9Y376
Chromosome Location	2q37.1
Pathway	mTOR signaling pathway; Integration of energy metabolism
Function	protein binding

Tel: 1-631-559-9269 1-516-512-3133

Email: info@creative-biomart.com Fax: 1-631-938-8127

45-1 Ramsey Road, Shirley, NY 11967, USA

PDB rendering based
on 1upk.



 Tel: 1-631-559-9269 1-516-512-3133

 Email: info@creative-biomart.com  Fax: 1-631-938-8127

 45-1 Ramsey Road, Shirley, NY 11967, USA