

# Recombinant Human CAB39 Protein, Myc/DDK-tagged, C13 and N15-labeled

Cat. No. CAB39-1500H Lot. No. (See product label)

## SPECIFICATION

<b>Product Overview</b>	CAB39 MS Standard C13 and N15-labeled recombinant protein (NP_001124321) with a C-terminal MYC/DDK tag, was expressed in HEK293 cells.
<b>Species</b>	Human
<b>Source</b>	HEK293
<b>Description</b>	CAB39 (Calcium Binding Protein 39) is a Protein Coding gene. Diseases associated with CAB39 include Non-Invasive Bladder Urothelial Carcinoma. Among its related pathways are Signaling by GPCR and RET signaling. Gene Ontology (GO) annotations related to this gene include binding and kinase binding. An important paralog of this gene is CAB39L.
<b>Molecular Mass</b>	39.9 kDa
<b>AA Sequence</b>	MPFFPGKSHKSPADIVKNLKESMAVLEKQDISDKKAEKATEEVSKNLVAMKEILYGT NEKEPQTEAVAQLAQELYNSGLLSTLVADLQLIDFEGKKDVAQIFNNILRRQIGTRTP TVEYICTQQNILFMLLKGYESPEIALNCGIMLRECIRHEPLAKIILWSEQFYDFFRYVE MSTFDIASDAFATFKDLLTRHKLLSAEFLEQHYDRFFSEYEKLLHSENYVTKRQSLKL LGELLLDRHNFTIMTKYISKPENLKLMMNLLRDKSRNIQFEAFHVFKVVFVANPNKTQPI LDILLKNQAKLIEFLSKFQNDRTEDQFNDEKTYLVKQIRD LKRPAQQEATRTRPLEQ KLISEEDLAANDILDYKDDDDKV
<b>Purity</b>	> 80% as determined by SDS-PAGE and Coomassie blue staining

 Tel: 1-631-559-9269 1-516-512-3133

 Email: [info@creative-biomart.com](mailto:info@creative-biomart.com)  Fax: 1-631-938-8127

 45-1 Ramsey Road, Shirley, NY 11967, USA

<b>Stability</b>	Stable for 3 months from receipt of products under proper storage and handling conditions.
<b>Storage</b>	Store at -80 centigrade. Avoid repeated freeze-thaw cycles.
<b>Concentration</b>	50 µg/mL as determined by BCA
<b>Storage Buffer</b>	100 mM glycine, 25 mM Tris-HCl, pH 7.3.

## GENE INFORMATION

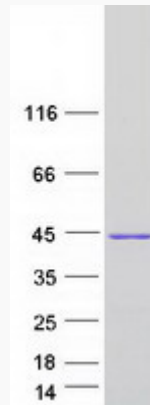
<b>Gene Name</b>	CAB39 calcium binding protein 39 [ Homo sapiens (human) ]
<b>Official Symbol</b>	CAB39
<b>Synonyms</b>	CAB39; calcium binding protein 39; calcium-binding protein 39; CGI 66; MO25; MO25alpha; CGI-66; FLJ22682;
<b>Gene ID</b>	51719
<b>mRNA Refseq</b>	NM_001130849
<b>Protein Refseq</b>	NP_001124321
<b>MIM</b>	612174
<b>UniProt ID</b>	Q9Y376

 Tel: 1-631-559-9269 1-516-512-3133

 Email: [info@creative-biomart.com](mailto:info@creative-biomart.com)  Fax: 1-631-938-8127

 45-1 Ramsey Road, Shirley, NY 11967, USA

**SDS-PAGE**



 Tel: 1-631-559-9269 1-516-512-3133

 Email: [info@creative-biomart.com](mailto:info@creative-biomart.com)  Fax: 1-631-938-8127

 45-1 Ramsey Road, Shirley, NY 11967, USA