

Recombinant Human CAB39 Protein, Myc/DDK-tagged, C13 and N15-labeled

Cat. No. CAB39-3917H Lot. No. (See product label)

SPECIFICATION

Product Overview	CAB39 MS Standard C13 and N15-labeled recombinant protein (NP_001124322) with a C-terminal MYC/DDK tag, was expressed in HEK293 cells.
Species	Human
Source	HEK293
Description	CAB39 (Calcium Binding Protein 39) is a Protein Coding gene. Diseases associated with CAB39 include Non-Invasive Bladder Urothelial Carcinoma. Among its related pathways are Signaling by GPCR and RET signaling. Gene Ontology (GO) annotations related to this gene include binding and kinase binding. An important paralog of this gene is CAB39L.
Molecular Mass	39.9 kDa
AA Sequence	MPFFPGKSHKSPADIVKNLKESMAVLEKQDISDKKAEKATEEVSKNLVAMKEILYGT NEKEPQTEAVAQLAQELYNSGLLSTLVADLQLIDFEGKKDVAQIFNNILRRQIGTRTP TVEYICTQQNILFMLLKGYESPEIALNCGIMLRECIRHEPLAKIILWSEQFYDFFRYVE MSTFDIASDAFATFKDLLTRHKLLSAEFLEQHYDRFFSEYEKLLHSENYVTKRQSLKL LGELLLDRHNFTIMTKYISKPENLKLMMNLLRDKSRNIQFEAFHVFKVVFVANPNKTQPI LDILLKNQAKLIEFLSKFQNDRTEDQFNDEKTYLVKQIRD LKRPAAQQEATRTRPLEQ KLISEEDLAANDILDYKDDDDKV
Purity	> 80% as determined by SDS-PAGE and Coomassie blue staining

 Tel: 1-631-559-9269 1-516-512-3133

 Email: info@creative-biomart.com  Fax: 1-631-938-8127

 45-1 Ramsey Road, Shirley, NY 11967, USA

Stability	Stable for 3 months from receipt of products under proper storage and handling conditions.
Storage	Store at -80 centigrade. Avoid repeated freeze-thaw cycles.
Concentration	50 µg/mL as determined by BCA
Storage Buffer	100 mM glycine, 25 mM Tris-HCl, pH 7.3.

GENE INFORMATION

Gene Name	CAB39 calcium binding protein 39 [Homo sapiens (human)]
Official Symbol	CAB39
Synonyms	CAB39; calcium binding protein 39; calcium-binding protein 39; CGI 66; MO25; MO25alpha; CGI-66; FLJ22682;
Gene ID	51719
mRNA Refseq	NM_001130850
Protein Refseq	NP_001124322
MIM	612174
UniProt ID	Q9Y376

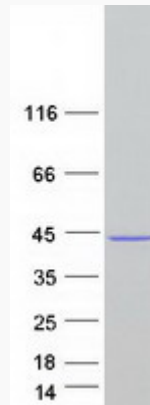
 Tel: 1-631-559-9269 1-516-512-3133

 Email: info@creative-biomart.com  Fax: 1-631-938-8127

 45-1 Ramsey Road, Shirley, NY 11967, USA



SDS-PAGE



Tel: 1-631-559-9269 1-516-512-3133

Email: info@creative-biomart.com Fax: 1-631-938-8127

45-1 Ramsey Road, Shirley, NY 11967, USA