

Recombinant Human CAB39L Protein, Myc/DDK-tagged, C13 and N15-labeled

Cat. No. CAB39L-1334H **Lot. No.** (See product label)

SPECIFICATION

Product Overview	CAB39L MS Standard C13 and N15-labeled recombinant protein (NP_001073138) with a C-terminal MYC/DDK tag, was expressed in HEK293 cells.
Species	Human
Source	HEK293
Description	CAB39L (Calcium Binding Protein 39 Like) is a Protein Coding gene. Diseases associated with CAB39L include Monocytic Leukemia and Leukemia, Acute Monocytic. Among its related pathways are Signaling by GPCR and RET signaling. Gene Ontology (GO) annotations related to this gene include binding. An important paralog of this gene is CAB39.
Molecular Mass	39.2 kDa
AA Sequence	MKKMPLFSKSHKNPAEIVKILKDNLAILEKQDKKTDKASEEVSKSLQAMKEILCGTNE KEPPTAQAQLAQELYSSGLLVTLIADLQLIDFEEKDVTQIFNNILRRQIGTRSPTVEY ISAHPHILFMLLKGYEAPQIALRCGIMLRECIRHEPLAKIILFSNQFRDFFKYVELSTFDI ASDAFATFKDLLTRHKVLVADFLEQNYDTIFEDYEKLLQSENYVTKRQSLKLLGELILD RHNFAIMTKYISKPENLKLMMNLLRDKSPNIQFEAFHVFKVVFASPHKTQPIVEILLKN QPKLIEFLSSFQKERTDDEQFADEKNYLIKQIRDLKKTAPTRTRPLEQKLISEEDLAAN DILDYKDDDDKV
Purity	> 80% as determined by SDS-PAGE and Coomassie blue staining

 Tel: 1-631-559-9269 1-516-512-3133

 Email: info@creative-biomart.com  Fax: 1-631-938-8127

 45-1 Ramsey Road, Shirley, NY 11967, USA

Stability	Stable for 3 months from receipt of products under proper storage and handling conditions.
Storage	Store at -80 centigrade. Avoid repeated freeze-thaw cycles.
Concentration	50 µg/mL as determined by BCA
Storage Buffer	100 mM glycine, 25 mM Tris-HCl, pH 7.3.

GENE INFORMATION

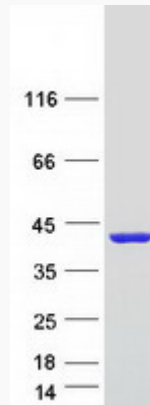
Gene Name	CAB39L calcium binding protein 39-like [Homo sapiens (human)]
Official Symbol	CAB39L
Synonyms	CAB39L; calcium binding protein 39-like; calcium-binding protein 39-like; bA103J18.3; FLJ12577; MO2L; MO25beta; antigen MLAA-34; mo25-like protein; U937-associated antigen; sarcoma antigen NY-SAR-79; MO25-BETA; RP11-103J18.3;
Gene ID	81617
mRNA Refseq	NM_001079670
Protein Refseq	NP_001073138
MIM	612175
UniProt ID	Q9H9S4

 Tel: 1-631-559-9269 1-516-512-3133

 Email: info@creative-biomart.com  Fax: 1-631-938-8127

 45-1 Ramsey Road, Shirley, NY 11967, USA

SDS-PAGE



 Tel: 1-631-559-9269 1-516-512-3133

 Email: info@creative-biomart.com  Fax: 1-631-938-8127

 45-1 Ramsey Road, Shirley, NY 11967, USA