

Recombinant Human CABIN1 Protein, GST-Tagged

Cat. No. CABIN1-0255H **Lot. No.** (See product label)

SPECIFICATION

Product Overview	Human CABIN1 partial ORF (NP_036427, 1 a.a. - 110 a.a.) recombinant protein with GST-tag at N-terminal.
Species	Human
Source	Wheat Germ
Description	Calcineurin plays an important role in the T-cell receptor-mediated signal transduction pathway. The protein encoded by this gene binds specifically to the activated form of calcineurin and inhibits calcineurin-mediated signal transduction. The encoded protein is found in the nucleus and contains a leucine zipper domain as well as several PEST motifs, sequences which confer targeted degradation to those proteins which contain them. Alternative splicing results in multiple transcript variants encoding two different isoforms. [provided by RefSeq, Jan 2011]
Molecular Mass	37.84 kDa
AA Sequence	MIRIAALNASSTIEDDHEGSFKSHKTQTKEAQEAEAFALYHKALDLQKHDRFEESAKA YHELLEASLLREAVSSGDEKEGLKHPGLILKYSTYKNLAQLAAQREDLETAM
Applications	Enzyme-linked Immunoabsorbent Assay Western Blot (Recombinant protein) Antibody Production Protein Array

 Tel: 1-631-559-9269 1-516-512-3133

 Email: info@creative-biomart.com  Fax: 1-631-938-8127

 45-1 Ramsey Road, Shirley, NY 11967, USA

Notes	Best use within three months from the date of receipt of this protein.
Storage	Store at -80 centigrade. Aliquot to avoid repeated freezing and thawing.
Storage Buffer	50 mM Tris-HCl, 10 mM reduced Glutathione, pH=8.0 in the elution buffer.

GENE INFORMATION

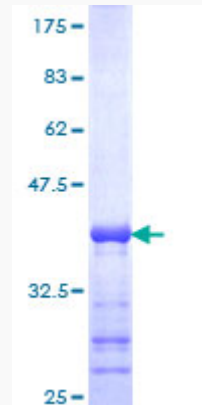
Gene Name	CABIN1 calcineurin binding protein 1 [Homo sapiens]
Official Symbol	CABIN1
Synonyms	CABIN1; calcineurin binding protein 1; calcineurin-binding protein cabin-1; KIAA0330; PPP3IN; calcineurin inhibitor; calcineurin binding protein cabin 1; CAIN;
Gene ID	23523
mRNA Refseq	NM_001199281
Protein Refseq	NP_001186210
MIM	604251
UniProt ID	Q9Y6J0

 Tel: 1-631-559-9269 1-516-512-3133

 Email: info@creative-biomart.com  Fax: 1-631-938-8127

 45-1 Ramsey Road, Shirley, NY 11967, USA

**Quality Control
Testing**



12.5% SDS-PAGE Stained with Coomassie Blue.

 Tel: 1-631-559-9269 1-516-512-3133

 Email: info@creative-biomart.com  Fax: 1-631-938-8127

 45-1 Ramsey Road, Shirley, NY 11967, USA