

## Recombinant Human CABIN1 Protein, His/GST-tagged

Cat. No. CABIN1-577H Lot. No. (See product label)

### SPECIFICATION

<b>Product Overview</b>	Recombinant Human CABIN1(Ser23~Glu288) fused with His/GST tag at N-terminal was expressed in E. coli.
<b>Species</b>	Human
<b>Source</b>	E.coli
<b>ProteinLength</b>	Ser23~Glu288
<b>Description</b>	Calcineurin plays an important role in the T-cell receptor-mediated signal transduction pathway. The protein encoded by this gene binds specifically to the activated form of calcineurin and inhibits calcineurin-mediated signal transduction. The encoded protein is found in the nucleus and contains a leucine zipper domain as well as several PEST motifs, sequences which confer targeted degradation to those proteins which contain them. Alternative splicing results in multiple transcript variants encoding two different isoforms.
<b>Form</b>	PBS, pH7.4, containing 0.01% SKL, 1mM DTT, 5% Trehalose and Proclin300.
<b>Molecular Mass</b>	60.6kDa
<b>Endotoxin</b>	<1.0EU per 1ug (determined by the LAL method)
<b>Purity</b>	> 90%

 Tel: 1-631-559-9269 1-516-512-3133

 Email: [info@creative-biomart.com](mailto:info@creative-biomart.com)  Fax: 1-631-938-8127

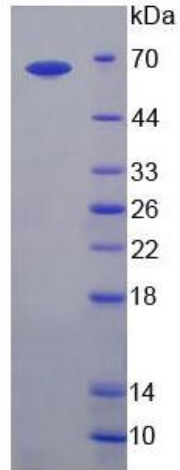
 45-1 Ramsey Road, Shirley, NY 11967, USA

<b>Applications</b>	Positive Control; Immunogen; SDS-PAGE; WB. If bio-activity of the protein is needed, please check active protein
<b>Stability</b>	The thermal stability is described by the loss rate. The loss rate was determined by accelerated thermal degradation test, that is, incubate the protein at 37 centigrade for 48h, and no obvious degradation and precipitation were observed. The loss rate is less than 5% within the expiration date under appropriate storage condition.
<b>Storage</b>	Avoid repeated freeze/thaw cycles. Store at 2-8 centigrade for one month. Aliquot and store at -80 centigrade for 12 months.
<b>Reconstitution</b>	Reconstitute in PBS or others
<b>GENE INFORMATION</b>	
<b>Gene Name</b>	CABIN1 calcineurin binding protein 1 [ Homo sapiens ]
<b>Official Symbol</b>	CABIN1
<b>Synonyms</b>	CABIN1; calcineurin binding protein 1; calcineurin-binding protein cabin-1; KIAA0330; PPP3IN; calcineurin inhibitor; calcineurin binding protein cabin 1; CAIN;
<b>Gene ID</b>	23523
<b>mRNA Refseq</b>	NM_001199281
<b>Protein Refseq</b>	NP_001186210
<b>MIM</b>	604251
<b>UniProt ID</b>	Q9Y6J0

 Tel: 1-631-559-9269 1-516-512-3133

 Email: [info@creative-biomart.com](mailto:info@creative-biomart.com)  Fax: 1-631-938-8127

 45-1 Ramsey Road, Shirley, NY 11967, USA



15% SDS-PAGE

Tel: 1-631-559-9269 1-516-512-3133

Email: [info@creative-biomart.com](mailto:info@creative-biomart.com) Fax: 1-631-938-8127

45-1 Ramsey Road, Shirley, NY 11967, USA