

## Recombinant Human CABLES1 Protein, GST-Tagged

Cat. No. CABLES1-0256H Lot. No. (See product label)

### SPECIFICATION

**Product Overview** Human CABLES1 full-length ORF (NP\_612384.1, 1 a.a. - 368 a.a.) recombinant protein with GST-tag at N-terminal.

**Species** Human

**Source** Wheat Germ

**Description** This gene encodes a protein involved in regulation of the cell cycle through interactions with several cyclin-dependent kinases. One study (PMID: 16177568) reported aberrant splicing of transcripts from this gene which results in removal of the cyclin binding domain only in human cancer cells, and reduction in gene expression was shown in colorectal cancers (PMID: 17982127). Multiple transcript variants encoding different isoforms have been found for this gene. [provided by RefSeq, Jan 2012]

**Molecular Mass** 68.3 kDa

**AA Sequence**

```

MLSKRGCHARIYADFPIRRLISQRSSLETLEDIEENAPLRRCTRLSGSPRPKNFKKIHF
IKNMRQH DTRNGRIVLISGRRSFCSIFS VLPYRDSTQVGD LKLDGGRQSTGAVSLKEI
IGLEGVELGADGKT VSYTQFLLPTNAFGARRNTIDSTSSFSQFRNLSHRSLSIGRASG
TQGSLDTGSDLGDFMDYDPNLLDDPQWPCGKHKRVLIFPSYMTTVIDYVKPSDLKK
DMNETFKEKFPHIKLTLSKIRSLKREMRKLAQEDCGLEEPTVAMAFVYFEKLALKGKL
NKQNRKLCAGACVLLAAKIGSDLKKHEVKHLIDKLEEKFRLNRRELIAFEFPVLVALEF
ALHLPEHEVMPHYRRLVQSS
    
```

 Tel: 1-631-559-9269 1-516-512-3133

 Email: [info@creative-biomart.com](mailto:info@creative-biomart.com)  Fax: 1-631-938-8127

 45-1 Ramsey Road, Shirley, NY 11967, USA

<b>Applications</b>	Enzyme-linked Immunoabsorbent Assay Western Blot (Recombinant protein) Antibody Production Protein Array
<b>Notes</b>	Best use within three months from the date of receipt of this protein.
<b>Storage</b>	Store at -80 centigrade. Aliquot to avoid repeated freezing and thawing.
<b>Storage Buffer</b>	50 mM Tris-HCl, 10 mM reduced Glutathione, pH=8.0 in the elution buffer.

## GENE INFORMATION

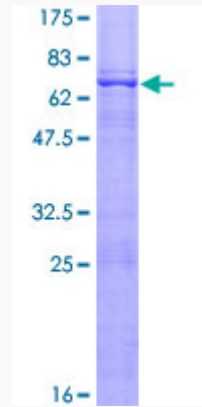
<b>Gene Name</b>	CABLES1 Cdk5 and Abl enzyme substrate 1 [ Homo sapiens ]
<b>Official Symbol</b>	CABLES1
<b>Synonyms</b>	CABLES1; Cdk5 and Abl enzyme substrate 1; CDK5 and ABL1 enzyme substrate 1; FLJ35924; HsT2563; interactor with CDK3 1; CABL1; IK3-1; CABLES;
<b>Gene ID</b>	91768
<b>mRNA Refseq</b>	NM_001100619
<b>Protein Refseq</b>	NP_001094089
<b>MIM</b>	609194
<b>UniProt ID</b>	Q8TDN4

 Tel: 1-631-559-9269 1-516-512-3133

 Email: [info@creative-biomart.com](mailto:info@creative-biomart.com)  Fax: 1-631-938-8127

 45-1 Ramsey Road, Shirley, NY 11967, USA

**Quality Control  
Testing**



12.5% SDS-PAGE Stained with Coomassie Blue.

 Tel: 1-631-559-9269 1-516-512-3133

 Email: [info@creative-biomart.com](mailto:info@creative-biomart.com)  Fax: 1-631-938-8127

 45-1 Ramsey Road, Shirley, NY 11967, USA