

Recombinant Human CABLES2 Protein, GST-Tagged

Cat. No. CABLES2-0257H Lot. No. (See product label)

SPECIFICATION

Product Overview	Human CABLES2 partial ORF (NP_112492, 131 a.a. - 239 a.a.) recombinant protein with GST-tag at N-terminal.
Species	Human
Source	Wheat Germ
Description	CABLES2 (Cdk5 And Abl Enzyme Substrate 2) is a Protein Coding gene. Among its related pathways are Factors involved in megakaryocyte development and platelet production and Response to elevated platelet cytosolic Ca ²⁺ . GO annotations related to this gene include cyclin-dependent protein serine/threonine kinase regulator activity. An important paralog of this gene is CABLES1.
Molecular Mass	37.73 kDa
AA Sequence	LEFLEDAVGCAPAQRTKHTSGSPRHKGLKKTHFIKNMRQYDTRNSRIVLICAKRSLC AAFSVLPYGEGLRISDLRVDSQKQRHPSGGVSVSSEMVFLEGLGADGKV
Applications	Enzyme-linked Immunoabsorbent Assay Western Blot (Recombinant protein) Antibody Production Protein Array
Notes	Best use within three months from the date of receipt of this protein.

 Tel: 1-631-559-9269 1-516-512-3133

 Email: info@creative-biomart.com  Fax: 1-631-938-8127

 45-1 Ramsey Road, Shirley, NY 11967, USA

Storage Store at -80 centigrade. Aliquot to avoid repeated freezing and thawing.

Storage Buffer 50 mM Tris-HCl, 10 mM reduced Glutathione, pH=8.0 in the elution buffer.

GENE INFORMATION

Gene Name [CABLES2 Cdk5 and Abl enzyme substrate 2 \[Homo sapiens \]](#)

Official Symbol [CABLES2](#)

Synonyms CABLES2; Cdk5 and Abl enzyme substrate 2; C20orf150, chromosome 20 open reading frame 150; CDK5 and ABL1 enzyme substrate 2; dJ908M14.2; ik3 2; interactor with CDK3 2; ik3-2; C20orf150;

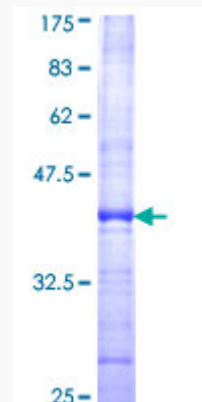
Gene ID [81928](#)

mRNA Refseq [NM_031215](#)

Protein Refseq [NP_112492](#)

UniProt ID [Q9BTV7](#)

Quality Control Testing



 Tel: 1-631-559-9269 1-516-512-3133

 Email: info@creative-biomart.com  Fax: 1-631-938-8127

 45-1 Ramsey Road, Shirley, NY 11967, USA



12.5% SDS-PAGE Stained with Coomassie Blue.

 Tel: 1-631-559-9269 1-516-512-3133

 Email: info@creative-biomart.com  Fax: 1-631-938-8127

 45-1 Ramsey Road, Shirley, NY 11967, USA