

Recombinant Human CABP2 Protein, Myc/DDK-tagged, C13 and N15-labeled

Cat. No. CABP2-3524H Lot. No. (See product label)

SPECIFICATION

Product Overview	CABP2 MS Standard C13 and N15-labeled recombinant protein (NP_057450) with a C-terminal MYC/DDK tag, was expressed in HEK293 cells.
Species	Human
Source	HEK293
Description	This gene belongs to a subfamily of calcium binding proteins that share similarity to calmodulin. Like calmodulin, these family members can likely stimulate calmodulin-dependent kinase II and the protein phosphatase calcineurin. Calcium binding proteins are an important component of calcium mediated cellular signal transduction. Two transcript variants encoding different isoforms have been found for this gene.
Molecular Mass	24.3 kDa
AA Sequence	MGNCAKRPWRRGPKDPLQWLGSPPRGSCSPSSSPKEQGDPAAGVQGYSVLNSL VGPACIFLRPSIAATQLDRELRP EEIEELQVAFQEFDRDRDGYIGCRELGACMRTLGY MPTEMELIEISQQISGGKVFDFELMGPKLLAETADMIGVREL RDAFREFD TNGD GRISVGELRAALKALLGERLSQREVDEILQDVDLNGDGLVDFEEFVRMMSRTRTRPL EQKLISEEDLAANDILDYKDDDDKV
Purity	> 80% as determined by SDS-PAGE and Coomassie blue staining
Stability	Stable for 3 months from receipt of products under proper storage and handling

 Tel: 1-631-559-9269 1-516-512-3133

 Email: info@creative-biomart.com  Fax: 1-631-938-8127

 45-1 Ramsey Road, Shirley, NY 11967, USA

conditions.

Storage Store at -80 centigrade. Avoid repeated freeze-thaw cycles.

Concentration 50 µg/mL as determined by BCA

Storage Buffer 100 mM glycine, 25 mM Tris-HCl, pH 7.3.

GENE INFORMATION

Gene Name CABP2 calcium binding protein 2 [Homo sapiens (human)]

Official Symbol CABP2

Synonyms CABP2; calcium binding protein 2; DFNB93; calcium-binding protein 2

Gene ID 51475

mRNA Refseq NM_016366

Protein Refseq NP_057450

MIM 607314

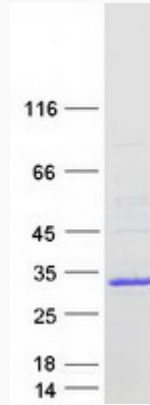
UniProt ID Q9NPB3

 Tel: 1-631-559-9269 1-516-512-3133

 Email: info@creative-biomart.com  Fax: 1-631-938-8127

 45-1 Ramsey Road, Shirley, NY 11967, USA

SDS-PAGE



 Tel: 1-631-559-9269 1-516-512-3133

 Email: info@creative-biomart.com  Fax: 1-631-938-8127

 45-1 Ramsey Road, Shirley, NY 11967, USA