

Recombinant Human CABS1 Protein, Myc/DDK-tagged, C13 and N15-labeled

Cat. No. CABS1-1434H Lot. No. (See product label)

SPECIFICATION

Product Overview	C4orf35 MS Standard C13 and N15-labeled recombinant protein (NP_149113) with a C-terminal MYC/DDK tag, was expressed in HEK293 cells.
Species	Human
Source	HEK293
Description	CABS1 (Calcium Binding Protein, Spermatid Associated 1) is a Protein Coding gene. Diseases associated with CABS1 include Cataract 38 and Actinomycosis. Gene Ontology (GO) annotations related to this gene include calcium ion binding.
Molecular Mass	42.9 kDa
AA Sequence	<p>MAEDGLPKIYSHPPTESSKTPTAATIFFGADNAIPKSETTITSEGDHVTSVNEYMLES DFSTTTDNKLTAKKEKLSKSEDDMGTFIKSTTHLQKEITSLTGTTNSITRDSITEHFMP VKIGNISSPVTTVSLIDFSTDIKEDILLATIDTGDAEISITSEVSGTLKDSSAGVADAPA FPRKKDEADMSNYNSSIKSNVPADEAVQVTDSIPEAEIPPAPEESFTTIPDITALEEEK ITEIDLSVLEDDTSAVATLTDSEKFITVFELTTSAEKDKDKREDTLLTDEETTEGASIG MERDTANEAETHSVLLTAVESRYDFVVPASIATNLVEESSTEEDLSETDNTETVPKIT EPFSGTTSVLDTPDYKEDTSTTETDIFELLKEEPDEFMITRTRPLEQKLISEEDLAAND ILDYKDDDDKV</p>
Purity	> 80% as determined by SDS-PAGE and Coomassie blue staining

 Tel: 1-631-559-9269 1-516-512-3133

 Email: info@creative-biomart.com  Fax: 1-631-938-8127

 45-1 Ramsey Road, Shirley, NY 11967, USA

Stability	Stable for 3 months from receipt of products under proper storage and handling conditions.
Storage	Store at -80 centigrade. Avoid repeated freeze-thaw cycles.
Concentration	50 µg/mL as determined by BCA
Storage Buffer	100 mM glycine, 25 mM Tris-HCl, pH 7.3.
GENE INFORMATION	
Gene Name	CABS1 calcium binding protein, spermatid associated 1 [Homo sapiens (human)]
Official Symbol	CABS1
Synonyms	CABS1; calcium binding protein, spermatid associated 1; CLPH; C4orf35; NYD-SP26; calcium-binding and spermatid-specific protein 1; calcium-binding protein, sperm-specific 1; calcium-binding protein, spermatid-specific 1; casein-like phosphoprotein; testis development protein NYD-SP26
Gene ID	85438
mRNA Refseq	NM_033122
Protein Refseq	NP_149113
MIM	618600
UniProt ID	Q96KC9

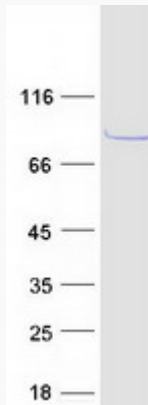
 Tel: 1-631-559-9269 1-516-512-3133

 Email: info@creative-biomart.com  Fax: 1-631-938-8127

 45-1 Ramsey Road, Shirley, NY 11967, USA



SDS-PAGE



Tel: 1-631-559-9269 1-516-512-3133

Email: info@creative-biomart.com Fax: 1-631-938-8127

45-1 Ramsey Road, Shirley, NY 11967, USA