

Recombinant Human CABS1 Protein, GST-tagged

Cat. No. CABS1-5199H Lot. No. (See product label)

SPECIFICATION

Product Overview	Human C4orf35 full-length ORF (AAH46111.1, 1 a.a. - 395 a.a.) recombinant protein with GST-tag at N-terminal.
Species	Human
Source	Wheat Germ
Description	CABS1 (Calcium Binding Protein, Spermatid Associated 1) is a Protein Coding gene. GO annotations related to this gene include calcium ion binding.
Molecular Mass	69.3 kDa
AA Sequence	<p>MAEDGLPKIYSHPPTESSKTPTAATIFFGADNAIPKSETTITSEGDHVTSVNEYML DFSTTTDNKLTAKKEKLKSEDDMGTFIKSTTHLQKEITSLTGTTNSITRDSITEHFMP VKIGNISSPVTTVSLIDFSTDIKEDILLATIDTGDAEISITSEVSGTLKDSSAGVADAPA FPRKKDEADMSNYNSSIKSNVPADEAVQVTDSIPEAEIPPAPEESFTTIPDITALEEEK ITEIDLSVLEDDTSAVATLTDSDEKFITVFELTTSAEKDKDKREDTLLTDEETTEGASIG MERDTANEAETHSVLLTAVESRYDFVVPASIAATNLVEESSTEEDLSETDNTETVPKIT EPFSGTTSVLDTPDYKEDTSTTETDIFELLKEEPDEFMI</p>
Applications	<p>Enzyme-linked Immunoabsorbent Assay Western Blot (Recombinant protein) Antibody Production Protein Array</p>

 Tel: 1-631-559-9269 1-516-512-3133

 Email: info@creative-biomart.com  Fax: 1-631-938-8127

 45-1 Ramsey Road, Shirley, NY 11967, USA

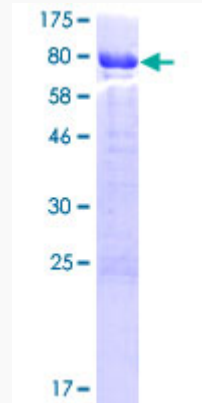
Notes	Best use within three months from the date of receipt of this protein.
Storage	Store at -80 centigrade. Aliquot to avoid repeated freezing and thawing.
Storage Buffer	50 mM Tris-HCl, 10 mM reduced Glutathione, pH=8.0 in the elution buffer.
GENE INFORMATION	
Gene Name	CABS1 calcium binding protein, spermatid associated 1 [Homo sapiens (human)]
Official Symbol	CABS1
Synonyms	CABS1; calcium binding protein, spermatid associated 1; Calcium Binding Protein, Spermatid Associated 1; Calcium-Binding Protein, Spermatid-Specific 1; Testis Development Protein NYD-SP26; Casein-Like Phosphoprotein; C4orf35; Calcium-Binding And Spermatid-Specific Protein 1; Calcium-Binding Protein, Sperm-Specific 1; Chromosome 4 Open Reading Frame 35; NYD-SP26; CLPH; calcium-binding and spermatid-specific protein 1; calcium-binding protein, sperm-specific 1; calcium-binding protein, spermatid-specific 1; casein-like phosphoprotein; testis development protein NYD-SP26
Gene ID	85438
mRNA Refseq	NM_033122
Protein Refseq	NP_149113
UniProt ID	Q96KC9

 Tel: 1-631-559-9269 1-516-512-3133

 Email: info@creative-biomart.com  Fax: 1-631-938-8127

 45-1 Ramsey Road, Shirley, NY 11967, USA

**Quality Control
Testing**



12.5% SDS-PAGE Stained with Coomassie Blue.

 Tel: 1-631-559-9269 1-516-512-3133

 Email: info@creative-biomart.com  Fax: 1-631-938-8127

 45-1 Ramsey Road, Shirley, NY 11967, USA