

Recombinant Guinea pig CACNA1C Full Length Transmembrane protein, His-tagged

Cat. No. CACNA1C-01G Lot. No. (See product label)

SPECIFICATION

Product Overview	Recombinant Guinea pig CACNA1C protein(O35505)(1-169aa), fused to N-terminal His tag, was expressed in E. coli.
Species	Guinea pig
Source	E.coli
ProteinLength	1-169aa
Form	If the delivery form is liquid, the default storage buffer is Tris/PBS-based buffer, 5%-50% glycerol. If the delivery form is lyophilized powder, the buffer before lyophilization is Tris/PBS-based buffer, 6% Trehalose, pH 8.0.
Molecular Mass	22.3 kDa
AA Sequence	FQEQGEQEYKNCELDKNQRQCVEYALKARPLRRYIPISITFFRLFRVMRLVKLLSRG EGIRTLWTFIKSFQALPYVALLIVMLFFIYAVIGMQVFGKIALNDTTEINRNNNFQTFP QAVLLLFRCATGEAWQDIMLACMPGKKRAPSEPSNSTEGETPCGSSFAVFY
Purity	Greater than 85% as determined by SDS-PAGE.
Storage	Store at -20°C/-80°C upon receipt, aliquoting is necessary for mutiple use. Avoid repeated freeze-thaw cycles.

 Tel: 1-631-559-9269 1-516-512-3133

 Email: info@creative-biomart.com  Fax: 1-631-938-8127

 45-1 Ramsey Road, Shirley, NY 11967, USA

Reconstitution

Please reconstitute protein in deionized sterile water to a concentration of 0.1-1.0 mg/mL. We recommend to add 5-50% of glycerol (final concentration) and aliquot for long-term storage at -20°C/-80°C. Our default final concentration of glycerol is 50%.

GENE INFORMATION**Gene Name**

[Cacna1c calcium channel, voltage-dependent, L type, alpha 1C subunit \[*Cavia porcellus* \]](#)

Official Symbol

[CACNA1C](#)

Synonyms

CACNA1C; calcium channel, voltage-dependent, L type, alpha 1C subunit; voltage-dependent L-type calcium channel subunit alpha-1C; voltage-gated calcium channel subunit alpha Cav1.2; L-type voltage-dependent calcium channel alpha-1 subunit; calcium channel, L type, alpha-1 polypeptide, isoform 1, cardiac muscle; CACH2; CACN2; CCHL1A1; CACNL1A1;

Gene ID

[100135490](#)

mRNA Refseq

[NM_001172923](#)

Protein Refseq

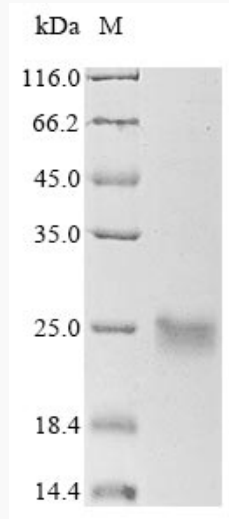
[NP_001166394](#)

 Tel: 1-631-559-9269 1-516-512-3133

 Email: info@creative-biomart.com  Fax: 1-631-938-8127

 45-1 Ramsey Road, Shirley, NY 11967, USA

SDS-PAGE



 Tel: 1-631-559-9269 1-516-512-3133

 Email: info@creative-biomart.com  Fax: 1-631-938-8127

 45-1 Ramsey Road, Shirley, NY 11967, USA