

Recombinant Human CACNA1C Protein, GST-Tagged

Cat. No. CACNA1C-0264H **Lot. No.** (See product label)

SPECIFICATION

Product Overview	Human CACNA1C partial ORF (NP_000710, 2039 a.a. - 2138 a.a.) recombinant protein with GST-tag at N-terminal.
Species	Human
Source	Wheat Germ
Description	<p>This gene encodes an alpha-1 subunit of a voltage-dependent calcium channel. Calcium channels mediate the influx of calcium ions into the cell upon membrane polarization. The alpha-1 subunit consists of 24 transmembrane segments and forms the pore through which ions pass into the cell. The calcium channel consists of a complex of alpha-1, alpha-2/delta, beta, and gamma subunits in a 1:1:1:1 ratio. There are multiple isoforms of each of these proteins, either encoded by different genes or the result of alternative splicing of transcripts. The protein encoded by this gene binds to and is inhibited by dihydropyridine. Alternative splicing results in many transcript variants encoding different proteins. Some of the predicted proteins may not produce functional ion channel subunits. [provided by RefSeq, Oct 2012]</p>
Molecular Mass	36.74 kDa
AA Sequence	AVLISEGLGQFAQDPKFI EVTTQELADACDMTIEEMESAADNILSGGAPQSPNGALLP FVNCRDAGQDRAGGEEDAGCVRARGRPSEEELQDSRVYVSSL
Applications	Enzyme-linked Immunoabsorbent Assay Western Blot (Recombinant protein)

 Tel: 1-631-559-9269 1-516-512-3133

 Email: info@creative-biomart.com  Fax: 1-631-938-8127

 45-1 Ramsey Road, Shirley, NY 11967, USA

	Antibody Production Protein Array
Notes	Best use within three months from the date of receipt of this protein.
Storage	Store at -80 centigrade. Aliquot to avoid repeated freezing and thawing.
Storage Buffer	50 mM Tris-HCl, 10 mM reduced Glutathione, pH=8.0 in the elution buffer.
GENE INFORMATION	
Gene Name	CACNA1C calcium channel, voltage-dependent, L type, alpha 1C subunit [Homo sapiens]
Official Symbol	CACNA1C
Synonyms	CACNA1C; calcium channel, voltage-dependent, L type, alpha 1C subunit; CACNL1A1, CCHL1A1; voltage-dependent L-type calcium channel subunit alpha-1C; CACH2; CACN2; Cav1.2; TS; DHPR, alpha-1 subunit; calcium channel, cardiac dihydropyridine-sensitive, alpha-1 subunit; calcium channel, L type, alpha-1 polypeptide, isoform 1, cardiac muscle; voltage-gated L-type calcium channel Cav1.2 alpha 1 subunit, splice variant 10*; CaV1.2; CCHL1A1; CACNL1A1; MGC120730;
Gene ID	775
mRNA Refseq	NM_000719
Protein Refseq	NP_000710
MIM	114205

 Tel: 1-631-559-9269 1-516-512-3133

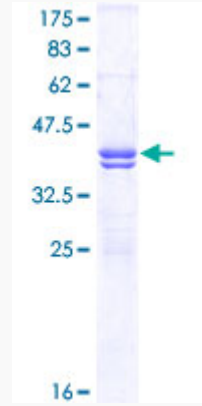
 Email: info@creative-biomart.com  Fax: 1-631-938-8127

 45-1 Ramsey Road, Shirley, NY 11967, USA

UniProt ID

Q13936

Quality Control
Testing



12.5% SDS-PAGE Stained with Coomassie Blue.

 Tel: 1-631-559-9269 1-516-512-3133

 Email: info@creative-biomart.com  Fax: 1-631-938-8127

 45-1 Ramsey Road, Shirley, NY 11967, USA