

Recombinant Human CACNA1S protein, His & T7-tagged

Cat. No. CACNA1S-1715H Lot. No. (See product label)

SPECIFICATION

Product Overview	Recombinant Human CACNA1S aa. (Ala1657~Leu1873 (Accession # Q13698)) fused with N-terminal His & T7 tag was produced in E. coli cells.
Species	Human
Source	E.coli
ProteinLength	Ala1657~Leu1873
Description	This gene encodes one of the five subunits of the slowly inactivating L-type voltage-dependent calcium channel in skeletal muscle cells. Mutations in this gene have been associated with hypokalemic periodic paralysis, thyrotoxic periodic paralysis and malignant hyperthermia susceptibility.
Form	Freeze-dried powder
Molecular Mass	Predicted Molecular Mass: 26.8kDa
Endotoxin	<1.0EU per 1ug (determined by the LAL method)
Purity	>95%
Applications	SDS-PAGE; WB; ELISA; IP.
Stability	The thermal stability is described by the loss rate. The loss rate was determined by

 Tel: 1-631-559-9269 1-516-512-3133

 Email: info@creative-biomart.com  Fax: 1-631-938-8127

 45-1 Ramsey Road, Shirley, NY 11967, USA

accelerated thermal degradation test, that is, incubate the protein at 37°C for 48h, and no obvious degradation and precipitation were observed. The loss rate is less than 5% within the expiration date under appropriate storage condition.

Storage

Avoid repeated freeze/thaw cycles. Store at 2-8°C for one month. Aliquot and store at -80°C for 12 months.

Storage buffer

Supplied as lyophilized form in 20mM Tris, 150mM NaCl, pH8.0, containing 1mM EDTA, 1mM DTT, 0.01% sarcosyl, 5% trehalose, and preservative.

Reconstitution

Reconstitute in sterile ddH₂O.

Isoelectric Point

6.2

GENE INFORMATION

Gene Name

CACNA1S calcium voltage-gated channel subunit alpha1 S [Homo sapiens (human)]

Official Symbol

CACNA1S

Synonyms

CACNA1S; calcium voltage-gated channel subunit alpha1 S; MHS5; HOKPP; TTPP1; Cav1.1; HOKPP1; hypoPP; CCHL1A3; CACNL1A3; voltage-dependent L-type calcium channel subunit alpha-1S; calcium channel, L type, alpha 1 polypeptide, isoform 3 (skeletal muscle, hypokalemic periodic paralysis); calcium channel, voltage-dependent, L type, alpha 1S subunit; dihydropyridine receptor alpha 1 subunit; dihydropyridine-sensitive L-type calcium channel alpha-1 subunit; voltage-gated calcium channel subunit alpha Cav1.1

Gene ID

779

 Tel: 1-631-559-9269 1-516-512-3133

 Email: info@creative-biomart.com  Fax: 1-631-938-8127

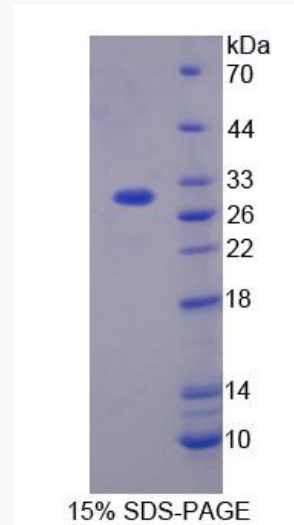
 45-1 Ramsey Road, Shirley, NY 11967, USA

mRNA Refseq [NM_000069.2](#)

Protein Refseq [NP_000060.2](#)

UniProt ID [Q13698](#)

SDS-PAGE



 Tel: 1-631-559-9269 1-516-512-3133

 Email: info@creative-biomart.com  Fax: 1-631-938-8127

 45-1 Ramsey Road, Shirley, NY 11967, USA