

Recombinant Human CACNA2D1 Protein (577-717 aa), His-tagged

Cat. No. CACNA2D1-2301H Lot. No. (See product label)

SPECIFICATION

| | |
|-------------------------|--|
| Product Overview | Recombinant Human CACNA2D1 Protein (577-717 aa) is produced by Yeast expression system. This protein is fused with a 6xHis tag at the N-terminal. Protein Description: Partial. |
| Species | Human |
| Source | Yeast |
| ProteinLength | 577-717 aa |
| Description | The alpha-2/delta subunit of voltage-dependent calcium channels regulates calcium current density and activation/inactivation kinetics of the calcium channel. Plays an important role in excitation-contraction coupling. |
| Form | Tris-based buffer,50% glycerol |
| Molecular Mass | 18.3 kDa |
| AA Sequence | KMIDGESGEKTFRTLKPKDQDERYIDKGNRTYTWTPVNGTDYSLALVLPYTFYYIKA KLEETITQARYSETLKPDPNFEEESGYTFIAPRDYCNLDKISDNNTFLLNFNEFIDRKT NNPSCNADLINRVLLDAGFTNELVQ |
| Purity | > 90% as determined by SDS-PAGE. |

 Tel: 1-631-559-9269 1-516-512-3133

 Email: info@creative-biomart.com  Fax: 1-631-938-8127

 45-1 Ramsey Road, Shirley, NY 11967, USA

| | |
|----------------------|---|
| Notes | Repeated freezing and thawing is not recommended. Store working aliquots at 4 centigrade for up to one week. |
| Storage | The shelf life is related to many factors, storage state, buffer ingredients, storage temperature and the stability of the protein itself. Generally, the shelf life of liquid form is 6 months at -20 centigrade/-80 centigrade. The shelf life of lyophilized form is 12 months at -20 centigrade/-80 centigrade. |
| Concentration | A hardcopy of COA will be sent along with the products. Please refer to it for detailed information. |

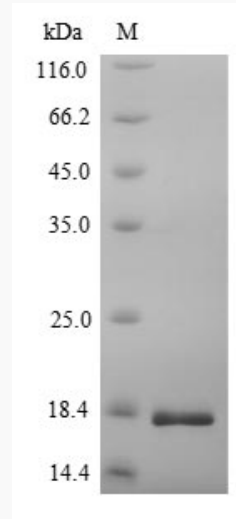
GENE INFORMATION

| | |
|------------------------|---|
| Gene Name | CACNA2D1 calcium channel, voltage-dependent, alpha 2/delta subunit 1 [Homo sapiens] |
| Official Symbol | CACNA2D1 |
| Synonyms | CACNA2D1; CACNA2; CCHL2A; CACNL2A; |
| Gene ID | 781 |
| mRNA Refseq | NM_000722 |
| Protein Refseq | NP_000713 |
| MIM | 114204 |
| UniProt ID | P54289 |

 Tel: 1-631-559-9269 1-516-512-3133

 Email: info@creative-biomart.com  Fax: 1-631-938-8127

 45-1 Ramsey Road, Shirley, NY 11967, USA



(Tris-Glycine gel) Discontinuous SDS-PAGE (reduced) with 5% enrichment gel and 15% separation gel.

Tel: 1-631-559-9269 1-516-512-3133

Email: info@creative-biomart.com Fax: 1-631-938-8127

45-1 Ramsey Road, Shirley, NY 11967, USA