

Recombinant Human CACNA2D1 Protein (528-668 aa), His-SUMO-tagged

Cat. No. CACNA2D1-2391H **Lot. No.** (See product label)

SPECIFICATION

Product Overview	Recombinant Human CACNA2D1 Protein (528-668 aa) is produced by E. coli expression system. This protein is fused with a 6xHis-SUMO tag at the N-terminal. Protein Description: Partial.
Species	Human
Source	E.coli
ProteinLength	528-668 aa
Description	The alpha-2/delta subunit of voltage-dependent calcium channels regulates calcium current density and activation/inactivation kinetics of the calcium channel. Plays an important role in excitation-contraction coupling.
Form	Tris-based buffer,50% glycerol
Molecular Mass	32.3 kDa
AA Sequence	QPKPIGVGIPTINLRKRRPNIQNPKSQEPVTLDFLDAELENLIKVEIRNKMIDGESGEK TFRTLKVSQDERYIDKGNRTYTWTPVNGTDYSLALVLPYTSFYIYKAKLEETITQARY SETLKPDNFEESGYTFIAPRDYCN
Purity	> 90% as determined by SDS-PAGE.

 Tel: 1-631-559-9269 1-516-512-3133

 Email: info@creative-biomart.com  Fax: 1-631-938-8127

 45-1 Ramsey Road, Shirley, NY 11967, USA

Notes	Repeated freezing and thawing is not recommended. Store working aliquots at 4 centigrade for up to one week.
Storage	The shelf life is related to many factors, storage state, buffer ingredients, storage temperature and the stability of the protein itself. Generally, the shelf life of liquid form is 6 months at -20 centigrade/-80 centigrade. The shelf life of lyophilized form is 12 months at -20 centigrade/-80 centigrade.
Concentration	A hardcopy of COA will be sent along with the products. Please refer to it for detailed information.

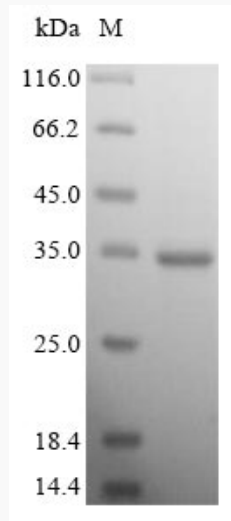
GENE INFORMATION

Gene Name	CACNA2D1 calcium channel, voltage-dependent, alpha 2/delta subunit 1 [Homo sapiens]
Official Symbol	CACNA2D1
Synonyms	CACNA2D1; CACNA2, CACNL2A, MHS3; CACNA2; CCHL2A; CACNL2A;
Gene ID	781
mRNA Refseq	NM_000722
Protein Refseq	NP_000713
MIM	114204
UniProt ID	P54289

 Tel: 1-631-559-9269 1-516-512-3133

 Email: info@creative-biomart.com  Fax: 1-631-938-8127

 45-1 Ramsey Road, Shirley, NY 11967, USA



(Tris-Glycine gel) Discontinuous SDS-PAGE (reduced) with 5% enrichment gel and 15% separation gel.

Tel: 1-631-559-9269 1-516-512-3133

Email: info@creative-biomart.com Fax: 1-631-938-8127

45-1 Ramsey Road, Shirley, NY 11967, USA