

Recombinant Human CACNA2D2 Protein, GST-Tagged

Cat. No. CACNA2D2-0269H Lot. No. (See product label)

SPECIFICATION

Product Overview	Human CACNA2D2 partial ORF (NP_006021, 65 a.a. - 162 a.a.) recombinant protein with GST-tag at N-terminal.
Species	Human
Source	Wheat Germ
Description	<p>Calcium channels mediate the entry of calcium ions into the cell upon membrane polarization. This gene encodes the alpha-2/delta subunit of the voltage-dependent calcium channel complex. The complex consists of the main channel-forming subunit alpha-1, and auxiliary subunits alpha-2/delta, beta, and gamma. The auxiliary subunits function in the assembly and membrane localization of the complex, and modulate calcium currents and channel activation/inactivation kinetics. The subunit encoded by this gene undergoes post-translational cleavage to yield the extracellular alpha2 peptide and a membrane-anchored delta polypeptide. This subunit is a receptor for the antiepileptic drug, gabapentin. Mutations in this gene are associated with early infantile epileptic encephalopathy. Single nucleotide polymorphisms in this gene are correlated with increased sensitivity to opioid drugs. Alternative splicing results in multiple transcript variants encoding different isoforms. [provided by RefSeq, Mar 2014]</p>
Molecular Mass	36.52 kDa
AA Sequence	PQQHTMQHWARRLEQEVDGVMRIFGGVQQLREIYKDNRNLFVQENEPQKLVEKV

 Tel: 1-631-559-9269 1-516-512-3133

 Email: info@creative-biomart.com  Fax: 1-631-938-8127

 45-1 Ramsey Road, Shirley, NY 11967, USA



AGDIESLLDRKVQALKRLADAAENFQKAHRWQDNIKEEDIVYY

Applications

Enzyme-linked Immunoabsorbent Assay
Western Blot (Recombinant protein)
Antibody Production
Protein Array

Notes

Best use within three months from the date of receipt of this protein.

Storage

Store at -80 centigrade. Aliquot to avoid repeated freezing and thawing.

Storage Buffer

50 mM Tris-HCl, 10 mM reduced Glutathione, pH=8.0 in the elution buffer.

GENE INFORMATION

Gene Name

CACNA2D2 calcium channel, voltage-dependent, alpha 2/delta subunit 2 [Homo sapiens]

Official Symbol

CACNA2D2

Synonyms

CACNA2D2; calcium channel, voltage-dependent, alpha 2/delta subunit 2; voltage-dependent calcium channel subunit alpha-2/delta-2; gene 26; KIAA0558; alpha 2 delta calcium channel subunit; voltage-gated calcium channel subunit alpha-2/delta-2; CACNA2D; LUAC11.1;

Gene ID

9254

mRNA Refseq

NM_001005505

Protein Refseq

NP_001005505

Tel: 1-631-559-9269 1-516-512-3133

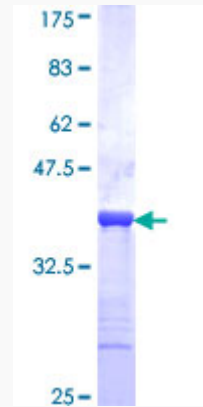
Email: info@creative-biomart.com Fax: 1-631-938-8127

45-1 Ramsey Road, Shirley, NY 11967, USA

MIM 607082

UniProt ID Q9NY47

**Quality Control
Testing**



12.5% SDS-PAGE Stained with Coomassie Blue.

 Tel: 1-631-559-9269 1-516-512-3133

 Email: info@creative-biomart.com  Fax: 1-631-938-8127

 45-1 Ramsey Road, Shirley, NY 11967, USA