

Recombinant Human CACNB1 Protein, GST-Tagged

Cat. No. CACNB1-0270H Lot. No. (See product label)

SPECIFICATION

Product Overview	Human CACNB1 full-length ORF (NP_000714.3, 1 a.a. - 598 a.a.) recombinant protein with GST-tag at N-terminal.
Species	Human
Source	Wheat Germ
Description	The protein encoded by this gene belongs to the calcium channel beta subunit family. It plays an important role in the calcium channel by modulating G protein inhibition, increasing peak calcium current, controlling the alpha-1 subunit membrane targeting and shifting the voltage dependence of activation and inactivation. Alternative splicing occurs at this locus and three transcript variants encoding three distinct isoforms have been identified. [provided by RefSeq, Jul 2008]
Molecular Mass	92.1 kDa
AA Sequence	MVQKTSMSRGPYPSPQEIPEVDFPSPQGKYSKRKGRFKRSDGSTSSDTSNSFV RQGSAESYTSRPSDSDVSLIEDREALRKEAERQALAQLEKAKTKPVAFVVRTNVGY NPSPGDEVVQGVAITFEPKDFLHIKEKYNNDDWWIGRLVKEGCEVGFIPSPVKLDSL RLLQEQLRQNRGSSKSGDNSSSSSLGDVVTGTRRPTPPASAKQKQKSTEHVPPY DVVPSMRPIILVGPSLKGYEVTMMQKALFDLKHFRDGRISITRVTADISLAKRSVLN NPSKHIIERSNTRSSLAEVQSEIERIFELARTLQLVALDADTINHPAQLSKTSLAPIIVYI KITSPKVLQRLIKSRGKSQSKHLNVQIAASEKLAQCPPEMFDIILDENQLEDACEHLAE YLEAYWKATHPPSSTPPNPLLNRMTATAALAASPAPVSNLQGPYLASGDQPLERAT

 Tel: 1-631-559-9269 1-516-512-3133

 Email: info@creative-biomart.com  Fax: 1-631-938-8127

 45-1 Ramsey Road, Shirley, NY 11967, USA



GEHASMHEYPGELGQPPGLYPSSHPPGRAGTLRALS RQDTFDADTPGSRNSAYTE
 LGDSCVDMETDPSEGPGLGDPAGGGTPPARQGSWEDEEEDYEEELTDNRNRGRN
 KARYCAEGGGPVLGRNKNELEGWGRGVYIR

Applications	Enzyme-linked Immunoabsorbent Assay Western Blot (Recombinant protein) Antibody Production Protein Array
Notes	Best use within three months from the date of receipt of this protein.
Storage	Store at -80 centigrade. Aliquot to avoid repeated freezing and thawing.
Storage Buffer	50 mM Tris-HCl, 10 mM reduced Glutathione, pH=8.0 in the elution buffer.

GENE INFORMATION

Gene Name	CACNB1 calcium channel, voltage-dependent, beta 1 subunit [Homo sapiens]
Official Symbol	CACNB1
Synonyms	CACNB1; calcium channel, voltage-dependent, beta 1 subunit; CACNLB1; voltage-dependent L-type calcium channel subunit beta-1; calcium channel, L type, beta 1 polypeptide; calcium channel voltage-dependent subunit beta 1; dihydropyridine-sensitive L-type, calcium channel beta-1 subunit; CAB1; CCHLB1; MGC41896;
Gene ID	782
mRNA Refseq	NM_000723
Protein Refseq	NP_000714

Tel: 1-631-559-9269 1-516-512-3133

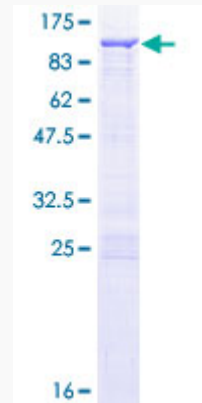
Email: info@creative-biomart.com Fax: 1-631-938-8127

45-1 Ramsey Road, Shirley, NY 11967, USA

MIM 114207

UniProt ID Q02641

**Quality Control
Testing**



12.5% SDS-PAGE Stained with Coomassie Blue.

 Tel: 1-631-559-9269 1-516-512-3133

 Email: info@creative-biomart.com  Fax: 1-631-938-8127

 45-1 Ramsey Road, Shirley, NY 11967, USA