

Recombinant Human CACNB1 Protein, Myc/DDK-tagged, C13 and N15-labeled

Cat. No. CACNB1-6188H **Lot. No.** (See product label)

SPECIFICATION

Product Overview

CACNB1 MS Standard C13 and N15-labeled recombinant protein (NP_000714) with a C-terminal MYC/DDK tag, was expressed in HEK293 cells.

Species

Human

Source

HEK293

Description

The protein encoded by this gene belongs to the calcium channel beta subunit family. It plays an important role in the calcium channel by modulating G protein inhibition, increasing peak calcium current, controlling the alpha-1 subunit membrane targeting and shifting the voltage dependence of activation and inactivation. Alternative splicing occurs at this locus and three transcript variants encoding three distinct isoforms have been identified.

Molecular Mass

65.5 kDa

AA Sequence

MVQKTSMSRGPYPSPQEIPMEVFDPSPPQGKYSKRKGRFKRSDGSTSSDTSNSFV
 RQGSAAESYTSRPSDSDVSLIEDREALRKEAERQALAQLEKAKTKPVAFVVRTNVGY
 NPSPGDEVVQGVVAITFEPKDFLHIKEKYNNDDWWIGRLVKEGCEVGFIPSPVKLDSL
 RLLQEQLRQNLGSSKSGDNSSSSSLGDVVTGTRRPTPPASAKQKQKSTEHVPPY
 DVVPSMRPIILVGPSLKGYEVTMMQKALFDLKHFRDGRSITRVTADISLAKRSVL
 NNPSKHIIERSNTRSSLAEVQSEIERIFELARTLQLVALDADTINHPAQLSKTSLAPIIV
 YIKITSPKVLQRLIKSRGKSQSKHLNVQIAASEKLAQCHPEMFDIILDENQLEDACEHL

 Tel: 1-631-559-9269 1-516-512-3133

 Email: info@creative-biomart.com  Fax: 1-631-938-8127

 45-1 Ramsey Road, Shirley, NY 11967, USA

AEYLEAYWKATHPPSSTPPNPLLNRMTATAALAASPAPVSNLQGPYLASGDQPLER
 ATGEHASMHEYPGELGQPPGLYPSSHPPGRAGTLRALSQRQDTFDADTPGSRNSAY
 TELGDSCVDMETDPSEGPGLGDPAGGGTPPARQGSWEDEEEDYEEELTDNRNRG
 RNKARYCAEGGGPVLGRNKNELEGWGRGVYIRTRTRPLEQKLISEEDLAANDILDY
 KDDDDKV

Purity > 80% as determined by SDS-PAGE and Coomassie blue staining

Stability Stable for 3 months from receipt of products under proper storage and handling conditions.

Storage Store at -80 centigrade. Avoid repeated freeze-thaw cycles.

Concentration 50 µg/mL as determined by BCA

Storage Buffer 100 mM glycine, 25 mM Tris-HCl, pH 7.3.

GENE INFORMATION

Gene Name [CACNB1 calcium voltage-gated channel auxiliary subunit beta 1 \[Homo sapiens \(human\) \]](#)

Official Symbol [CACNB1](#)

Synonyms CACNB1; calcium channel, voltage-dependent, beta 1 subunit; CACNLB1; voltage-dependent L-type calcium channel subunit beta-1; calcium channel, L type, beta 1 polypeptide; calcium channel voltage-dependent subunit beta 1; dihydropyridine-sensitive L-type, calcium channel beta-1 subunit; CAB1; CCHLB1; MGC41896;

Gene ID [782](#)

 Tel: 1-631-559-9269 1-516-512-3133

 Email: info@creative-biomart.com  Fax: 1-631-938-8127

 45-1 Ramsey Road, Shirley, NY 11967, USA

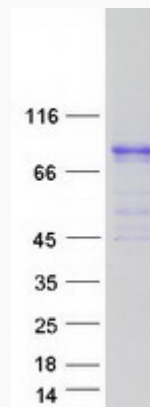
mRNA Refseq [NM_000723](#)

Protein Refseq [NP_000714](#)

MIM [114207](#)

UniProt ID [Q02641](#)

SDS-PAGE



 Tel: 1-631-559-9269 1-516-512-3133

 Email: info@creative-biomart.com  Fax: 1-631-938-8127

 45-1 Ramsey Road, Shirley, NY 11967, USA